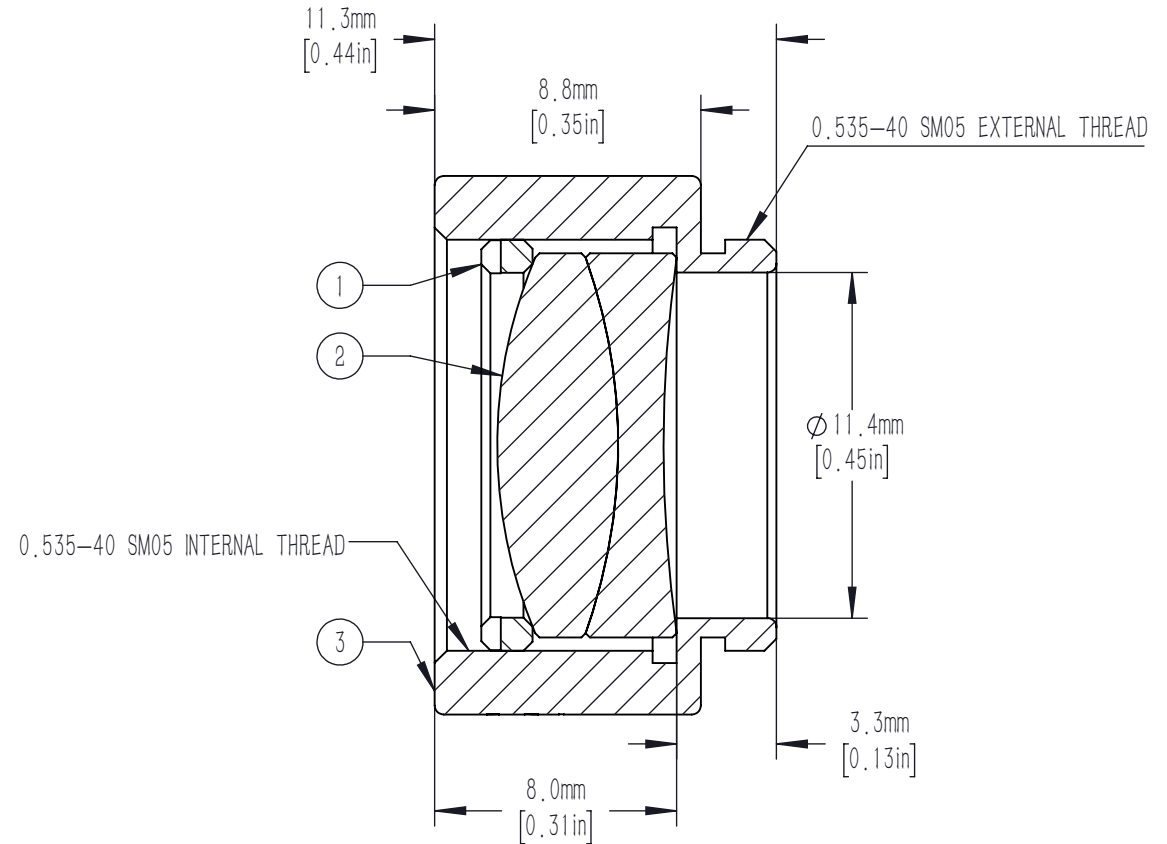
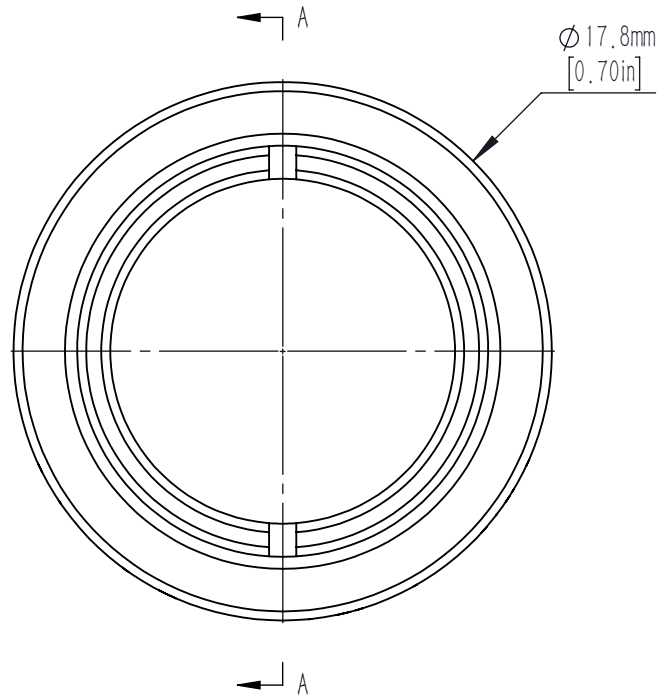




	PART DESCRIPTION	MATERIAL
①	SM05RR	ANODIZED ALUMINUM
②	AD127-50-C	N-BAF10/N-SF6
③	SM05L8-A	ANODIZED ALUMINUM



#### NOTES/SPECIFICATIONS:

- DESIGN WAVELENGTHS: 1016nm, 1330nm, AND 1550nm
- FOCAL LENGTH: 49.9.0mm  $\pm 1\%$
- BACK FOCAL LENGTH (REF): 43.5mm
- LENS DIAMETER: 12.7mm  $+0.00/-0.10$ mm
- LENS CENTER THICKNESS: 5.5mm
- CLEAR APERTURE:  $>90\%$  OF LENS DIAMETER
- SURFACE QUALITY: 40-20 SCRATCH-DIG
- CENTRATION:  $<3$  arcmin
- COATING: BBAR  $R_{avg} < 0.5\%$  FROM 1050-1700nm  
0° AOI, ON BOTH OPTICAL SURFACES

FOR INFORMATION ONLY NOT FOR  
MANUFACTURING PURPOSES

DRAWING PROJECTION						
	NAME	DATE	Mounted D12.7mm, F=50mm, IR Achromat, Coated			
DRAWN	CWD	2022/5/18	AD127-50-C-ML			
APPROVAL	ZSB	2022/5/18	MATERIAL	WEIGHT	SCALE	REV
FOR INFORMATION ONLYNOT FOR MANUFACTURING PURPOSES			N/A		4:1	A