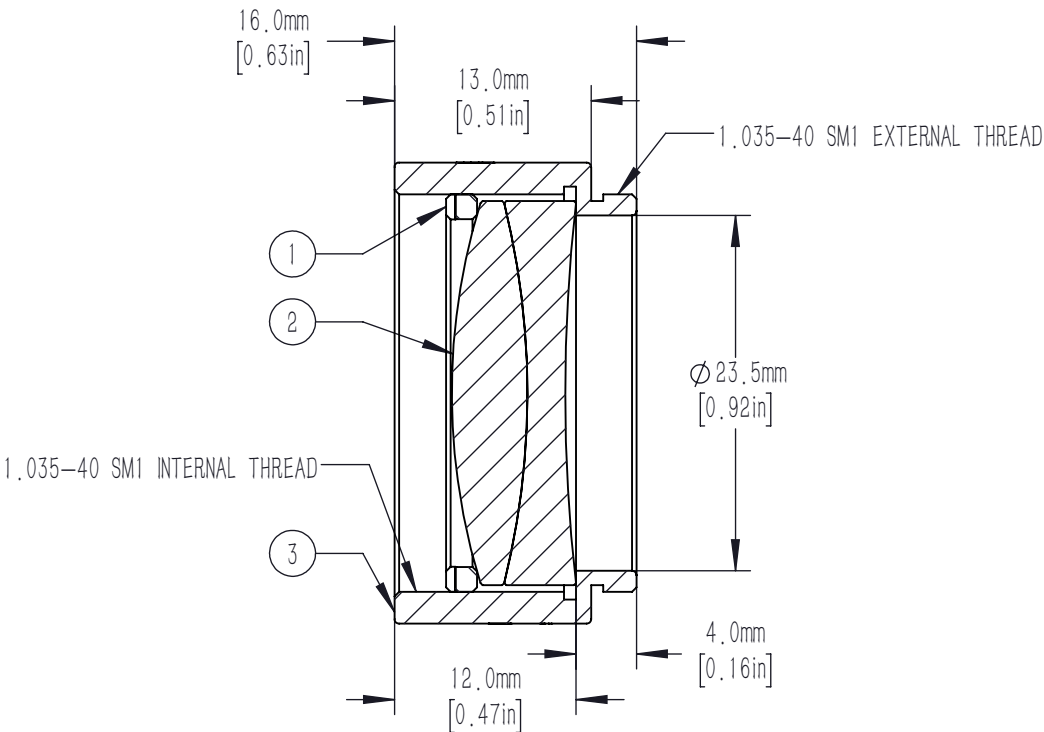
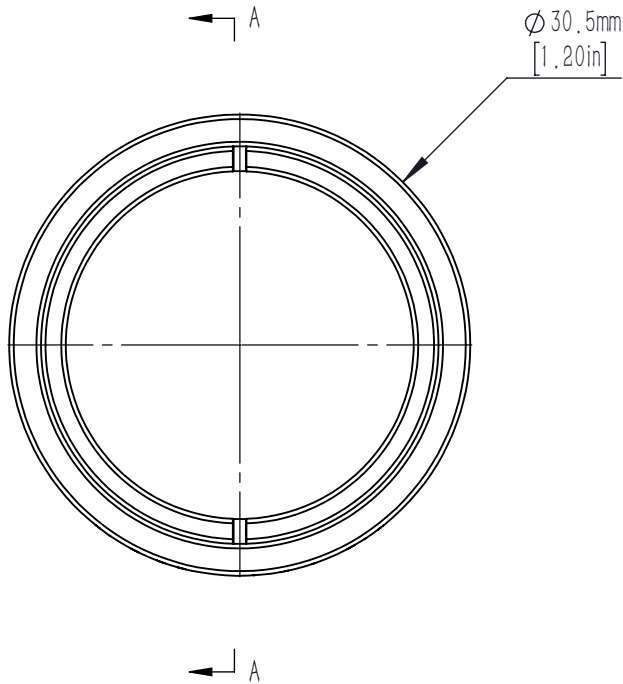




	PART DESCRIPTION	MATERIAL
①	SM1RR	ANODIZED ALUMINUM
②	AD254-150-C	N-BAF10/N-SF6
③	SM1L12-A	ANODIZED ALUMINUM



- NOTES/SPECIFICATIONS:
- DESIGN WAVELENGTHS: 1016 nm, 1330 nm, AND 1550 nm
 - FOCAL LENGTH: 150.5mm $\pm 1\%$
 - BACK FOCAL LENGTH (REF): 140.8mm
 - LENS DIAMETER: 25.4mm $+0.00/-0.10$ mm
 - LENS CENTER THICKNESS: 7.5mm
 - CLEAR APERTURE: $>90\%$ OF LENS DIAMETER
 - SURFACE QUALITY: 40-20 SCRATCH-DIG
 - CENTRATION: <3 arcmin
 - COATING: BBAR $R_{avg} < 0.5\%$ FROM 1050-1700nm
0° AOI, ON BOTH OPTICAL SURFACES

FOR INFORMATION ONLY NOT FOR
MANUFACTURING PURPOSES

DRAWING PROJECTION						
	NAME	DATE	Mounted D25.4mm, F=150mm, IR Achromat, C Coated			
DRAWN	CWD	2022/5/18	AD254-150-C-ML			
APPROVAL	ZSB	2022/5/18	MATERIAL	WEIGHT	SCALE	REV
FOR INFORMATION ONLYNOT FOR MANUFACTURING PURPOSES			N/A		2:1	A