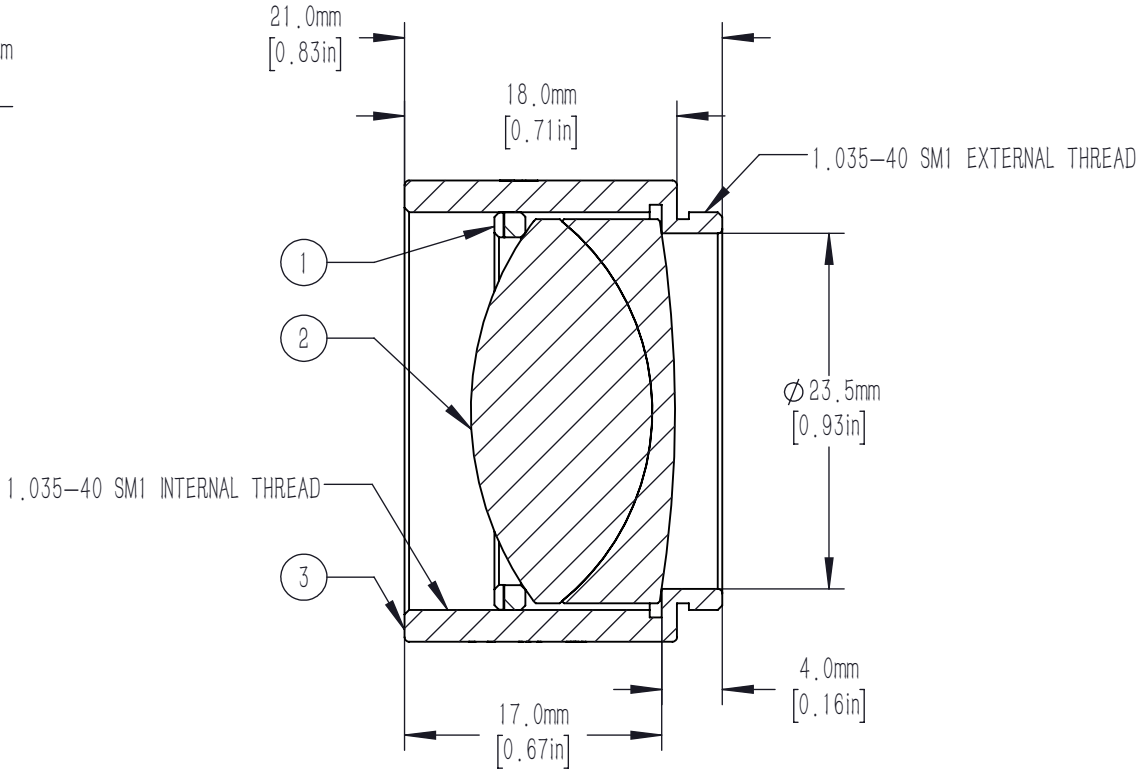
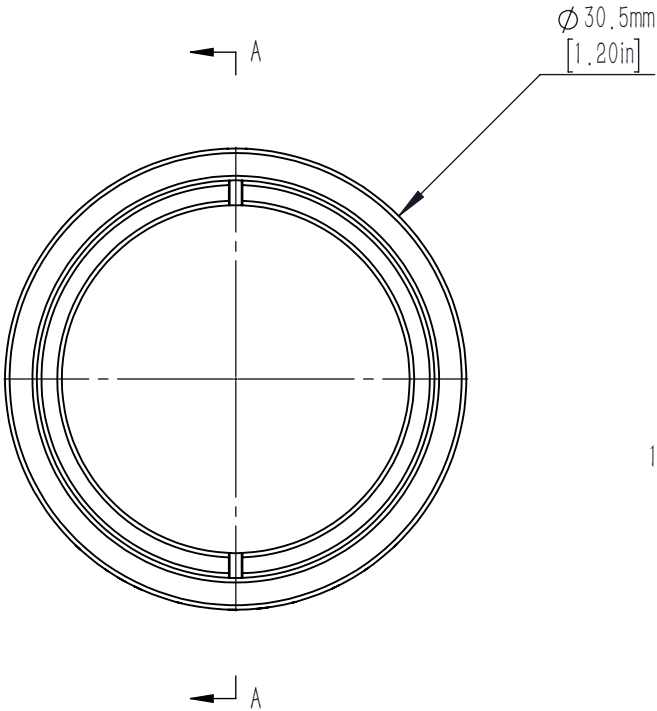



	PART DESCRIPTION	MATERIAL
①	SM1RR	ANODIZED ALUMINUM
②	AD254-30-B	N-BAF10/N-SF6HT
③	SM1L17-A	ANODIZED ALUMINUM



- NOTES/SPECIFICATIONS:
- DESIGN WAVELENGTHS: 706.5nm, 855nm, AND 1015nm
  - FOCAL LENGTH: 30.0mm  $\pm 1\%$
  - BACK FOCAL LENGTH (REF): 23.0mm
  - LENS DIAMETER: 25.4mm  $+0.00/-0.10$ mm
  - LENS CENTER THICKNESS: 13.5mm
  - CLEAR APERTURE:  $>90\%$  OF LENS DIAMETER
  - SURFACE QUALITY: 40-20 SCRATCH-DIG
  - CENTRATION:  $<3$  arcmin
  - COATING: BBAR  $R_{avg} < 0.5\%$  FROM 650-1050nm  
0° AOI, ON BOTH OPTICAL SURFACES

FOR INFORMATION ONLY NOT FOR  
MANUFACTURING PURPOSES

DRAWING PROJECTION						
	NAME	DATE	Mounted D25.4mm, F=30mm, Near IR Achromat, B Coated			
DRAWN	CWD	2022/5/18	AD254-30-B-ML			
APPROVAL	ZSB	2022/5/18	MATERIAL	WEIGHT	SCALE	REV
FOR INFORMATION ONLYNOT FOR MANUFACTURING PURPOSES			N/A		2:1	A