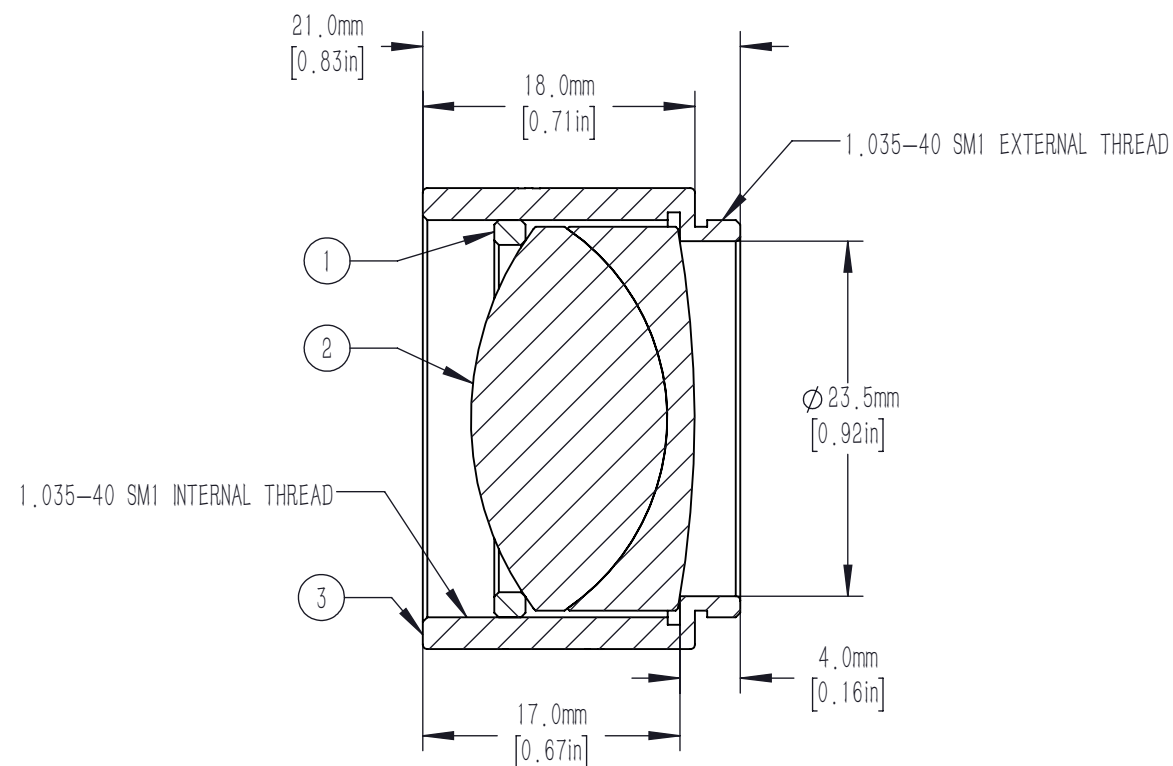
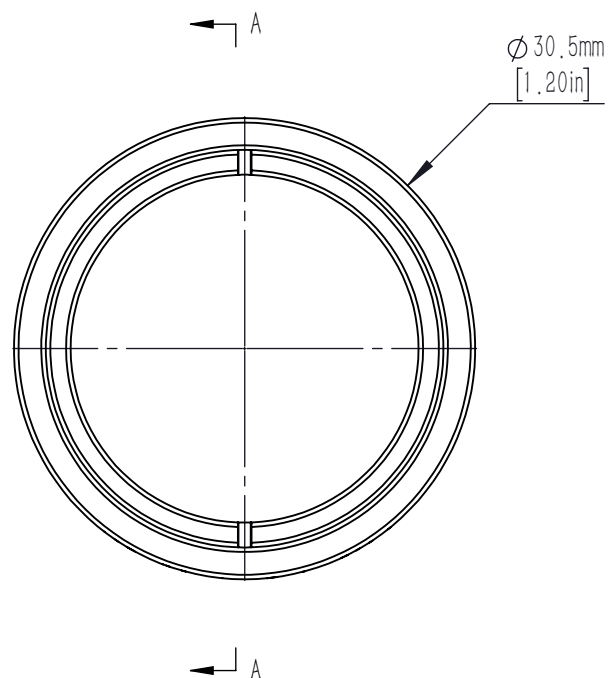




	PART DESCRIPTION	MATERIAL
①	SM1RR	ANODIZED ALUMINUM
②	AD254-30-C	N-BAF10/N-SF6
③	SM1L17-A	ANODIZED ALUMINUM



NOTES/SPECIFICATIONS:

- DESIGN WAVELENGTHS: 1016nm, 1330nm, AND 1550nm
- FOCAL LENGTH: 30.4mm $\pm 1\%$
- BACK FOCAL LENGTH (REF): 22.2mm
- LENS DIAMETER: 25.4mm $+0.00/-0.10$ mm
- LENS CENTER THICKNESS: 14.8mm
- CLEAR APERTURE: $>90\%$ OF LENS DIAMETER
- SURFACE QUALITY: 40-20 SCRATCH-DIG
- CENTRATION: <3 arcmin
- COATING: BBAR $R_{avg} < 0.5\%$ FROM 1050-1700nm
0° AOI, ON BOTH OPTICAL SURFACES

FOR INFORMATION ONLY NOT FOR
MANUFACTURING PURPOSES

DRAWING PROJECTION							
	NAME	DATE	Mounted D25.4mm, F=30mm, Telecom Achromat, C Coated				
DRAWN	CWD	2022/5/18	AD254-30-C-ML				
APPROVAL	ZSE	2022/5/18	MATERIAL	WEIGHT	SCALE	REV	
FOR INFORMATION ONLY NOT FOR MANUFACTURING PURPOSES			N/A		2:1	A	