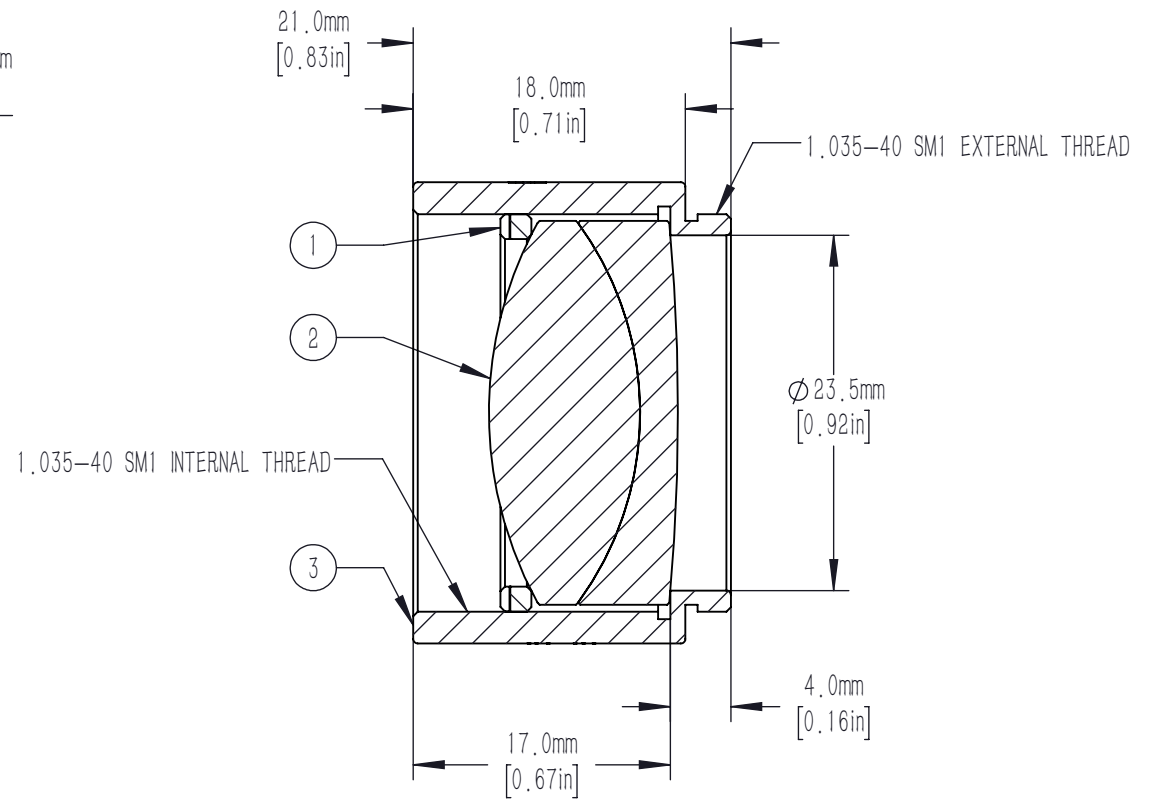
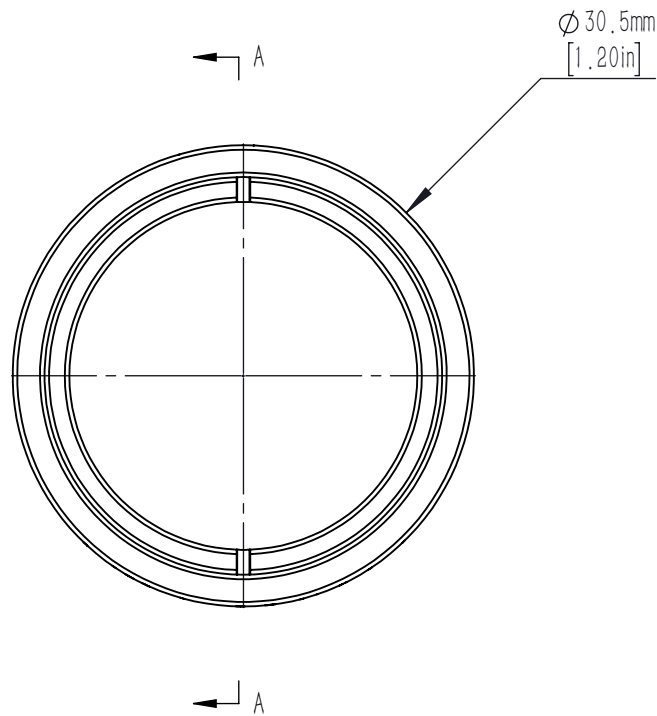



	PART DESCRIPTION	MATERIAL
①	SM1RR	ANODIZED ALUMINUM
②	AD254-40-B	N-BAF10/N-SF6HT
③	SM1L17-A	ANODIZED ALUMINUM



NOTES/SPECIFICATIONS:

- DESIGN WAVELENGTHS: 706.5nm, 855nm, AND 1015nm
- FOCAL LENGTH: 40.0mm $\pm 1\%$
- BACK FOCAL LENGTH (REF): 32.8mm
- LENS DIAMETER: 25.4mm $+0.00/-0.10\text{mm}$
- LENS CENTER THICKNESS: 12.5mm
- CLEAR APERTURE: $>90\%$ OF LENS DIAMETER
- SURFACE QUALITY: 40-20 SCRATCH-DIG
- CENTRATION: <3 arcmin
- COATING: BBAR $R_{\text{avg}} < 0.5\%$ FROM 650-1050nm
0° AOI, ON BOTH OPTICAL SURFACES

FOR INFORMATION ONLY NOT FOR
MANUFACTURING PURPOSES

DRAWING PROJECTION						
	NAME	DATE	Mounted D25.4mm, F=40mm, Near IR Achromat, B Coated			
DRAWN	CWD	2022/5/18	AD254-40-B-ML			
APPROVAL	ZSB	2022/5/18	MATERIAL	WEIGHT	SCALE	REV
FOR INFORMATION ONLYNOT FOR MANUFACTURING PURPOSES			N/A		2:1	A