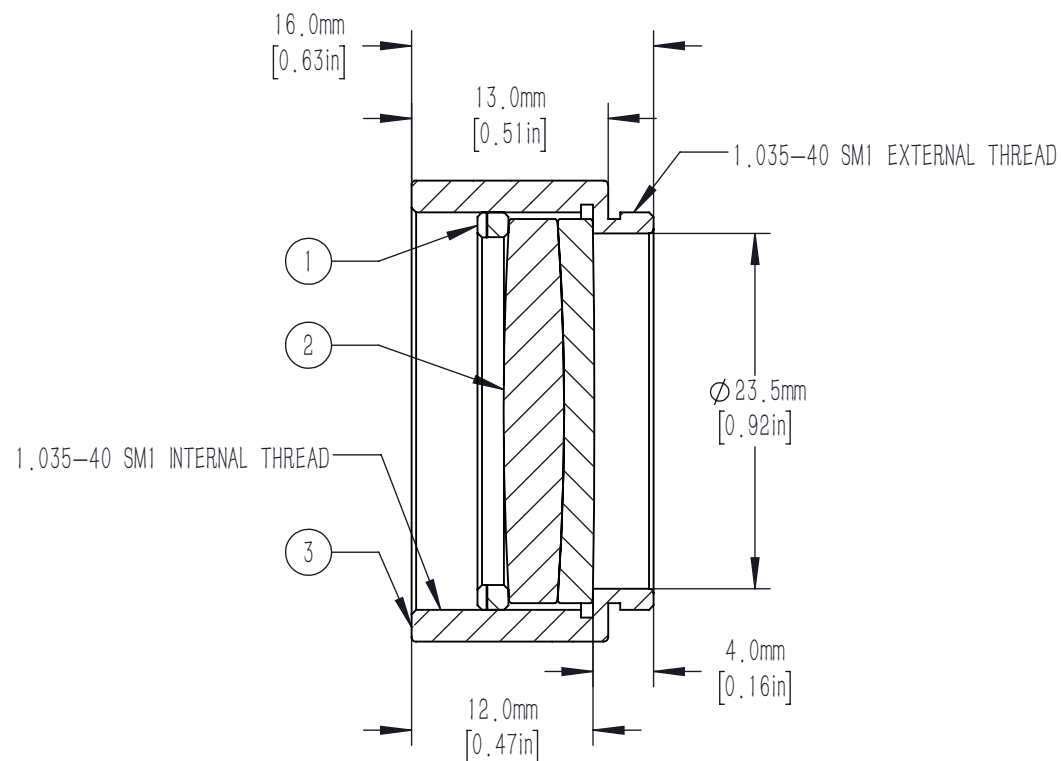
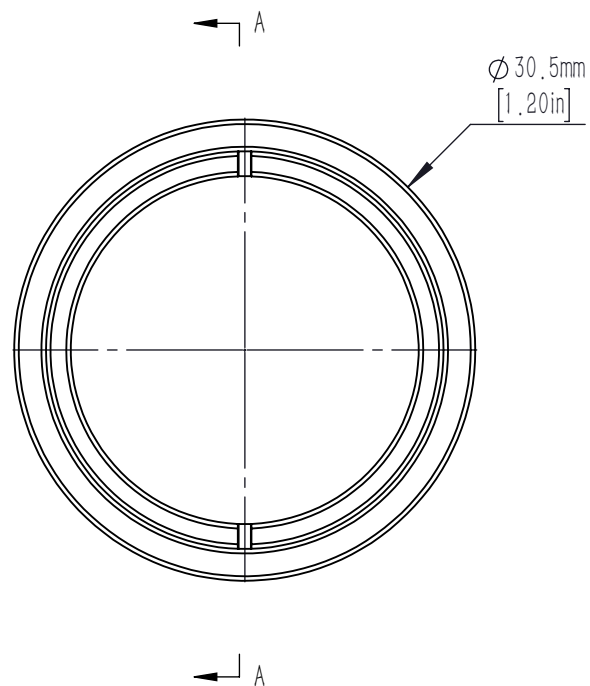




	PART DESCRIPTION	MATERIAL
①	SM1RR	ANODIZED ALUMINUM
②	AD254-400-A	N-BK7/SF2
③	SM1L12-A	ANODIZED ALUMINUM



NOTES/SPECIFICATIONS:

- DESIGN WAVELENGTHS: 486.1nm, 587.6nm, AND 656.3nm
- FOCAL LENGTH: $399.3\text{mm} \pm 1\%$
- BACK FOCAL LENGTH (REF): 396.0mm
- LENS DIAMETER: $25.4\text{mm} +0.00/-0.10\text{mm}$
- LENS CENTER THICKNESS: 6.0mm
- CLEAR APERTURE: $>90\%$ OF LENS DIAMETER
- SURFACE QUALITY: 40-20 SCRATCH-DIG
- CENTRATION: <3 arcmin
- COATING: BBAR $R_{\text{avg}} < 0.5\%$ FROM 400-700nm
0° AOI, ON BOTH OPTICAL SURFACES

FOR INFORMATION ONLY NOT FOR
MANUFACTURING PURPOSES

DRAWING PROJECTION						
	NAME	DATE	Mounted D25.4mm, F=400.0mm, Visible Achromat			
DRAWN	CWD	2022/5/18	AD254-400-A-ML			
APPROVAL	ZSB	2022/5/18	MATERIAL	WEIGHT	SCALE	REV
FOR INFORMATION ONLYNOT FOR MANUFACTURING PURPOSES			N/A		2:1	A