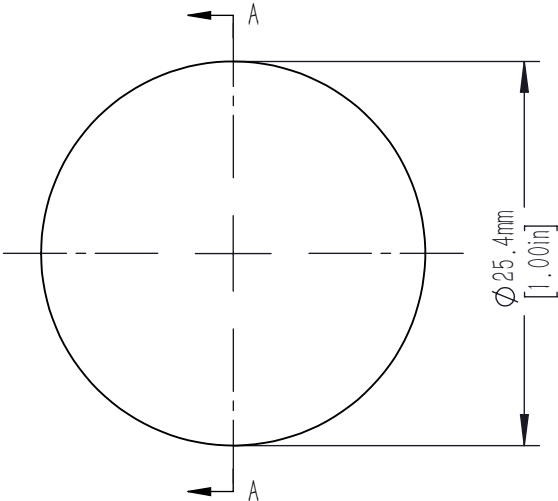
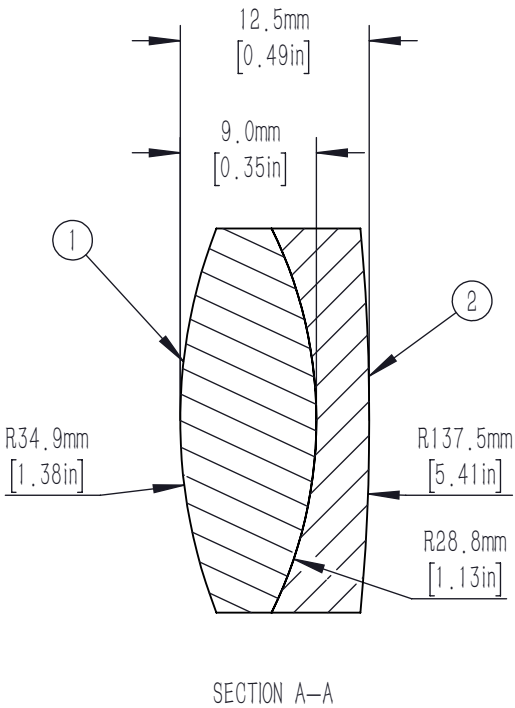




	MATERIAL
①	N-BAF10
②	N-SF6



NOTES/SPECIFICATIONS:

- DESIGN WAVELENGTHS: 488nm, 707nm, & 1064nm
- FOCAL LENGTH:  $f=50.0\text{mm} \pm 1\%$  AT 707nm
- BACK FOCAL LENGTH (REF): 43.39mm
- CLEAR APERTURE  $> \Phi 22.86\text{mm}$
- SURFACE QUALITY: 40-20 SCRATCH-DIG
- CENTRATION:  $<3\text{arcmin}$
- DIAMETER TOLERANCE:  $+0.0/-0.1\text{mm}$
- THICKNESS TOLERANCE:  $\pm 0.20\text{mm}$
- COATING: BBAR  $R_{\text{avg}} < 1.0\%$  FROM 400-1100nm, 0 AOI, ON OUTER OPTICAL SURFACES

FOR INFORMATION ONLY  
NOT FOR MANUFACTURING PURPOSES

DRAWING PROJECTION 						
	NAME	DATE	F=50.0mm, D25.4 Achromatic Doublet, AB Coated			
DRAWN	CWD	2022/5/18	AD254-50-AB			
APPROVAL	ZSE	2022/5/18	MATERIAL	WEIGHT	SCALE	REV
FOR INFORMATION ONLYNOT FOR MANUFACTURING PURPOSES			SEE TABLE	0.01673Kg	2:1	A