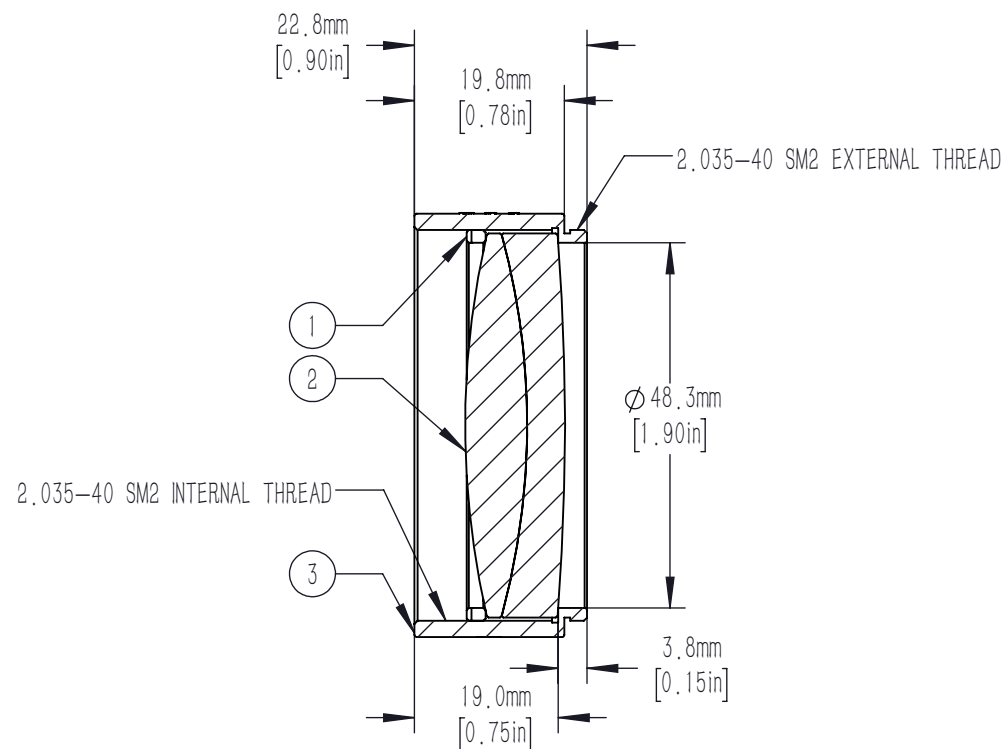
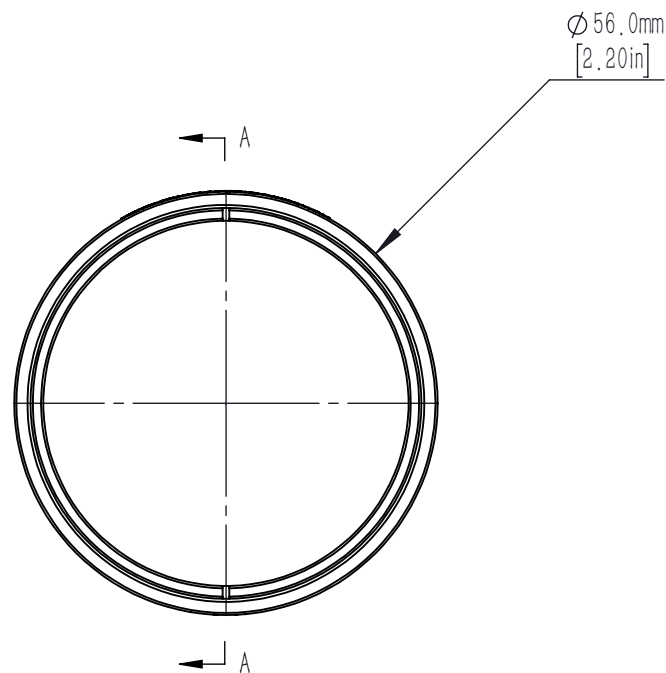




	PART DESCRIPTION	MATERIAL
①	SM2RR	ANODIZED ALUMINUM
②	AD508-150-B	N-LAK22/N-SF6HT
③	SM2L19-A	ANODIZED ALUMINUM



NOTES/SPECIFICATIONS:

- DESIGN WAVELENGTHS: 706.5nm, 855nm, AND 1015nm
- FOCAL LENGTH: 150.0mm $\pm 1\%$
- BACK FOCAL LENGTH (REF): 145.3mm
- LENS DIAMETER: 50.8mm $+0.00/-0.10\text{mm}$
- LENS CENTER THICKNESS: 13.2mm
- CLEAR APERTURE: $>90\%$ OF LENS DIAMETER
- SURFACE QUALITY: 40-20 SCRATCH-DIG
- CENTRATION: <3 arcmin
- COATING: BBAR $R_{\text{avg}} < 0.5\%$ FROM 650-1050nm
0° AOI, ON BOTH OPTICAL SURFACES

FOR INFORMATION ONLY NOT FOR
MANUFACTURING PURPOSES

DRAWING PROJECTION							
	NAME	DATE	Mounted D50.8mm, F=150mm, Near IR Achromat, B Coated				
DRAWN	CWD	2022/5/18	AD508-150-B-ML				
APPROVAL	ZSE	2022/5/18	MATERIAL	WEIGHT	SCALE	REV	
FOR INFORMATION ONLY NOT FOR MANUFACTURING PURPOSES			N/A		1:1	A	