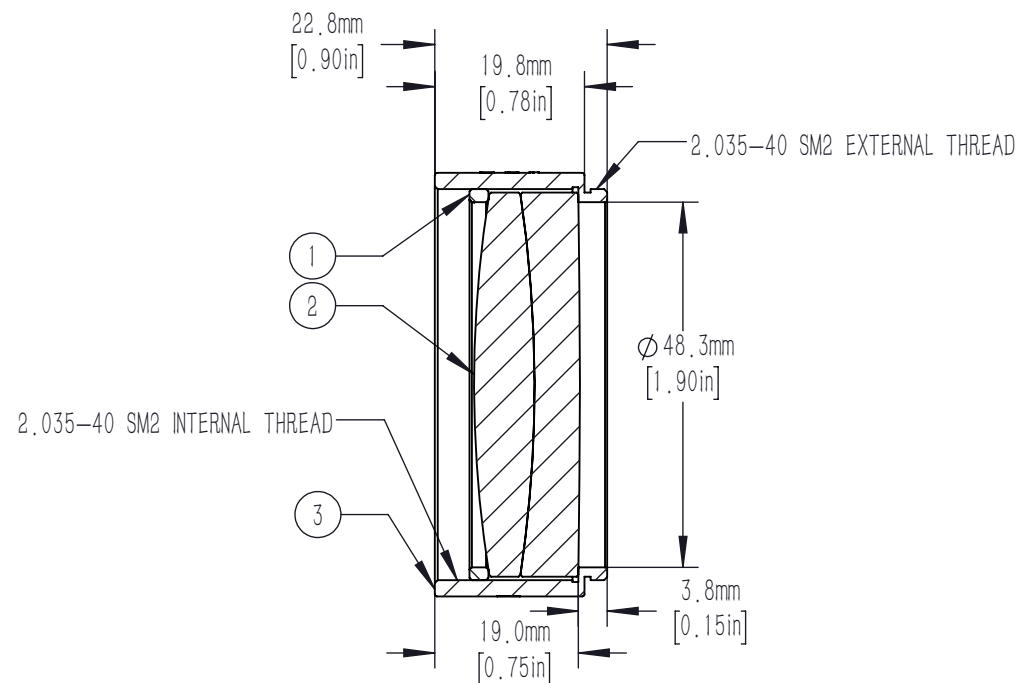
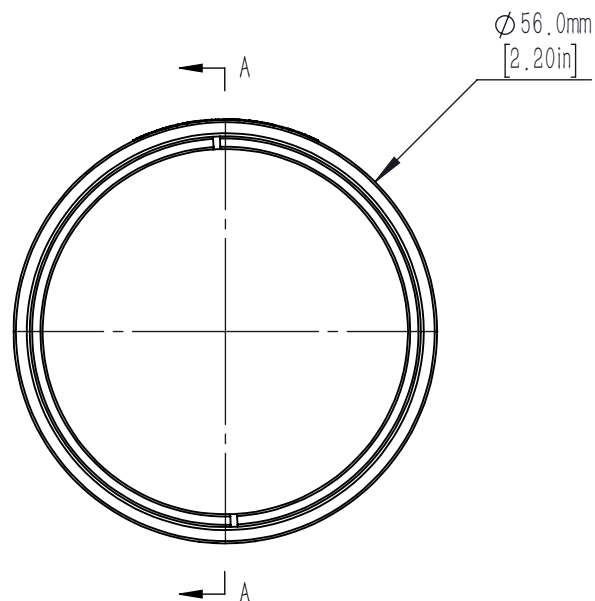




	PART DESCRIPTION	MATERIAL
①	SM2RR	ANODIZED ALUMINUM
②	AD508-300-B	N-SK2/N-SF11
③	SM2L19-A	ANODIZED ALUMINUM



#### NOTES/SPECIFICATIONS:

- DESIGN WAVELENGTHS: 706.5nm, 855nm, AND 1015nm
- FOCAL LENGTH: 300.0mm  $\pm 1\%$
- BACK FOCAL LENGTH (REF): 291.4mm
- LENS DIAMETER: 50.8mm  $+0.00/-0.10$ mm
- LENS CENTER THICKNESS: 14.0mm
- CLEAR APERTURE:  $>90\%$  OF LENS DIAMETER
- SURFACE QUALITY: 40-20 SCRATCH-DIG
- CENTRATION:  $<3$  arcmin
- COATING: BBAR Ravg  $<0.5\%$  FROM 650-1050nm  
0° AOI, ON BOTH OPTICAL SURFACES

FOR INFORMATION ONLY NOT FOR  
MANUFACTURING PURPOSES

DRAWING PROJECTION						
	NAME	DATE	Mounted D50.8mm, F=300.0mm NIR ACHROMAT, B Coated			
DRAWN	CWD	2022/5/18	AD508-300-B-ML			
APPROVAL	ZSB	2022/5/18	MATERIAL	WEIGHT	SCALE	REV
FOR INFORMATION ONLY NOT FOR MANUFACTURING PURPOSES			N/A		1:1	A