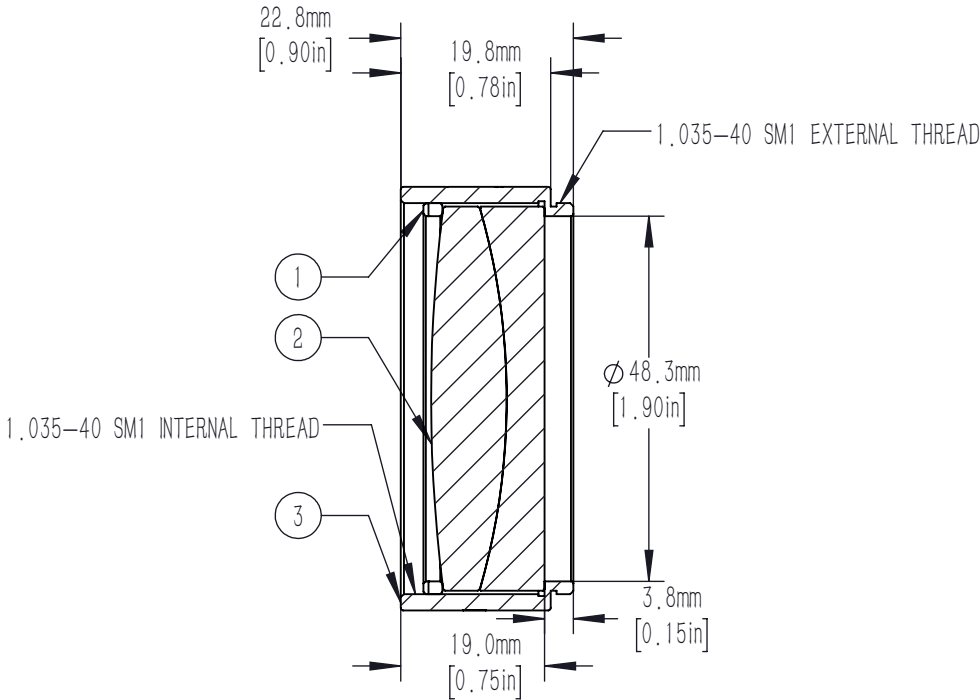
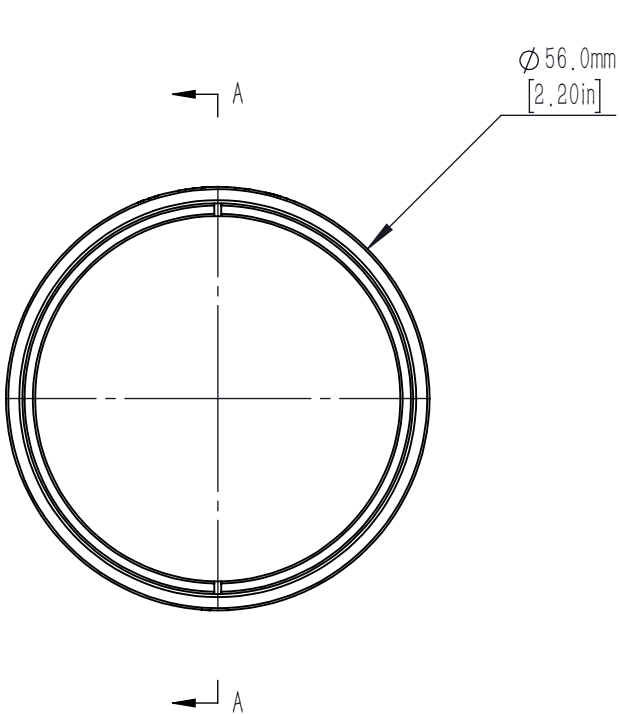


| | PART DESCRIPTION | MATERIAL |
|---|------------------|-------------------|
| ① | SM2RR | ANODIZED ALUMINUM |
| ② | AD508-300-C | H-LAF3B/H-ZF13 |
| ③ | SM2L19-A | ANODIZED ALUMINUM |



- NOTES/SPECIFICATIONS:
- DESIGN WAVELENGTHS: 1016 nm, 1330 nm, AND 1550 nm
 - FOCAL LENGTH: 300.0mm $\pm 1\%$
 - BACK FOCAL LENGTH (REF): 290.8mm
 - LENS DIAMETER: 50.8mm $+0.00/-0.10\text{mm}$
 - LENS CENTER THICKNESS: 15.0mm
 - CLEAR APERTURE: $>90\%$ OF LENS DIAMETER
 - SURFACE QUALITY: 40-20 SCRATCH-DIG
 - CENTRATION: <3 arcmin
 - COATING: BBAR Ravg $<0.5\%$ FROM 1050-1700nm
0° AOI, ON BOTH OPTICAL SURFACES

FOR INFORMATION ONLY NOT FOR
MANUFACTURING PURPOSES

| | | | | | | |
|---|------|-----------|---|--------|-------|-----|
| DRAWING PROJECTION | | | 睿创光科 RCOPTICS | | | |
| | NAME | DATE | Mounted D50.8mm, F=300.0mm MOUNTED VISIBLE ACHROMAT, C Coated | | | |
| DRAWN | CWD | 2022/5/18 | AD508-300-C-ML | | | |
| APPROVAL | ZSE | 2022/5/18 | MATERIAL | WEIGHT | SCALE | REV |
| FOR INFORMATION ONLYNOT FOR MANUFACTURING PURPOSES | | | N/A | | 1:1 | A |