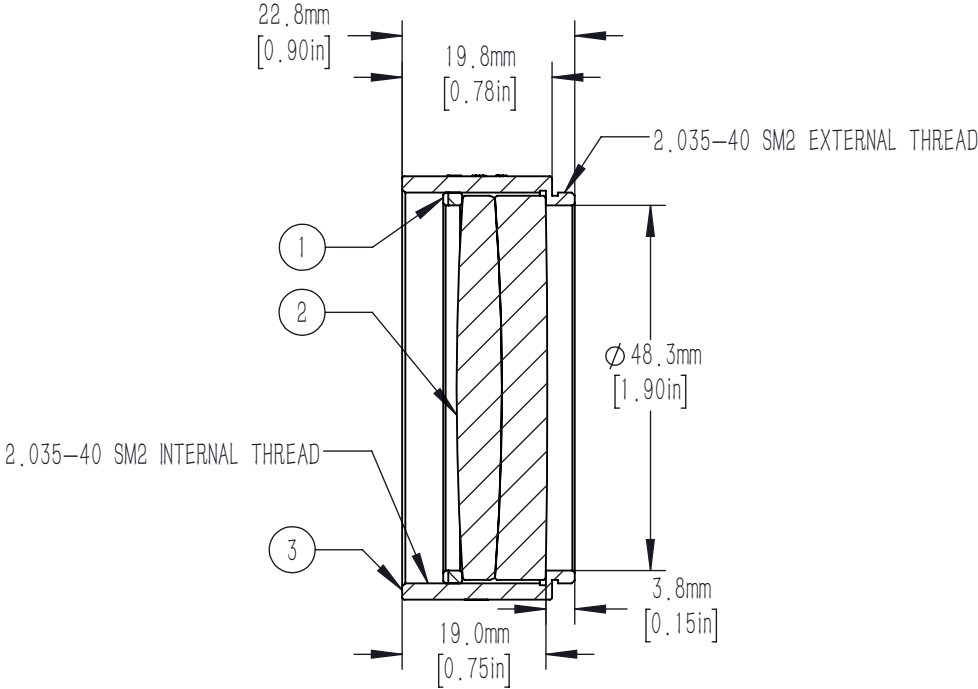
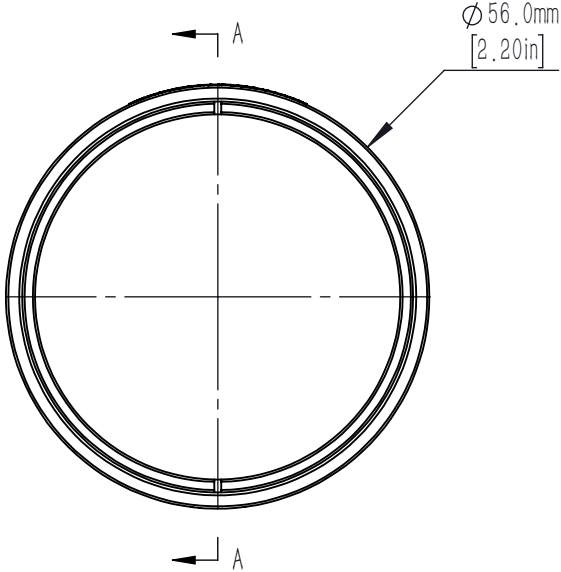




	PART DESCRIPTION	MATERIAL
①	SM2RR	ANODIZED ALUMINUM
②	AD508-750-A	N-BK7/N-SF2
③	SM2L19-A	ANODIZED ALUMINUM



- NOTES/SPECIFICATIONS:
- DESIGN WAVELENGTHS: 486.1nm, 587.6, AND 656.3nm
 - FOCAL LENGTH: 750.0mm $\pm 1\%$
 - BACK FOCAL LENGTH (REF): 743.9mm
 - LENS DIAMETER: 50.8mm $+0.00/-0.10$ mm
 - LENS CENTER THICKNESS: 12.0mm
 - CLEAR APERTURE: $>90\%$ OF LENS DIAMETER
 - SURFACE QUALITY: 40-20 SCRATCH-DIG
 - CENTRATION: <3 arcmin
 - COATING: BBAR $R_{avg} < 0.5\%$ FROM 400-700nm
0° AOI, ON BOTH OPTICAL SURFACES

FOR INFORMATION ONLY NOT FOR
MANUFACTURING PURPOSES

DRAWING PROJECTION							
	NAME	DATE	Mounted D50.8mm, F=750.0mm VISIBLE ACHROMAT, A Coated				
DRAWN	CWD	2022/5/18	AD508-750-A-ML				
APPROVAL	ZSB	2022/5/18	MATERIAL	WEIGHT	SCALE	REV	
FOR INFORMATION ONLYNOT FOR MANUFACTURING PURPOSES			N/A		1:1	A	