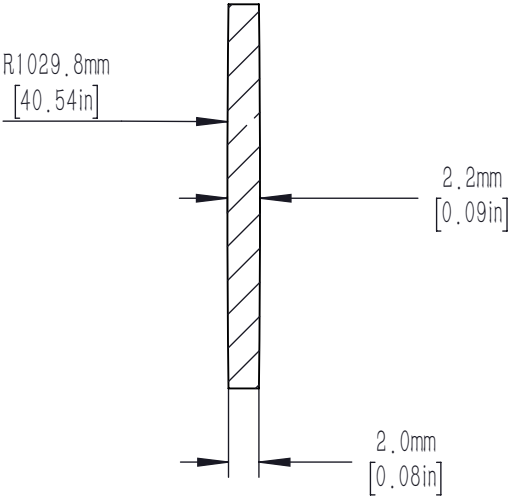
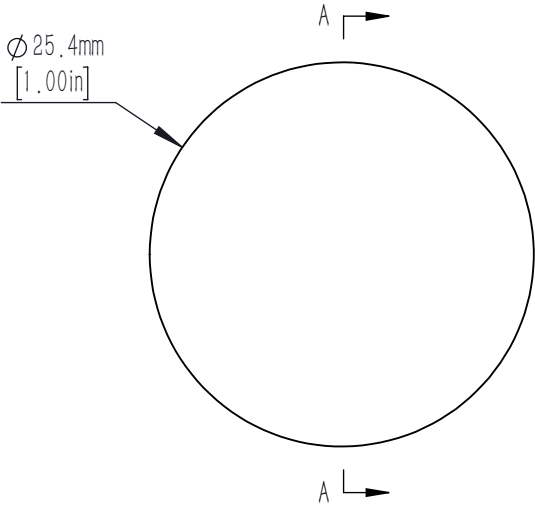




FOR INFORMATION ONLY NOT FOR
MANUFACTURING PURPOSES



SECTION A-A

- NOTES/SPECIFICATIONS:
- 1. DESIGN WAVELENGTH: 587.6nm1.
 - 2. FOCAL LENGTH: f=1000.0mm ± 1%
 - 3. BACK FOCAL LENGTH(REF): bf=999.3mm
 - 4. CLEAR APERTURE: >90%
 - 5. SURFACE QUALITY: 40-20 SCRATCH-DIG
 - 6. CENTRATION: <3arcmin
 - 7. DIAMETER TOLERANCE: +0.0/-0.1mm
 - 8. THICKNESS TOLERANCE: ±0.1mm
 - 9. COATING,BBAR Ravg<0.5% FROM 350-700nm,AOI: 0° , ON OUTER OPTICAL SURFACES

DRAWING PROJECTION 						
	NAME	DATE	D25.4 F=1000.0 N-BK7 A Coated Bi Convex Lens			
DRAWN	CWD	2022/5/18	EX1254-1000-A			
APPROVAL	ZSB	2022/5/18	MATERIAL	WEIGHT	SCALE	REV
FOR INFORMATION ONLYNOT FOR MANUFACTURING PURPOSES			N-BK7	0.0026kg	2:1	A