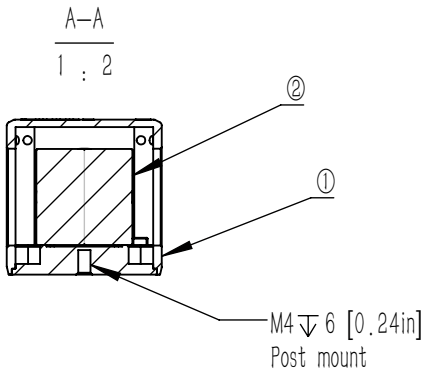
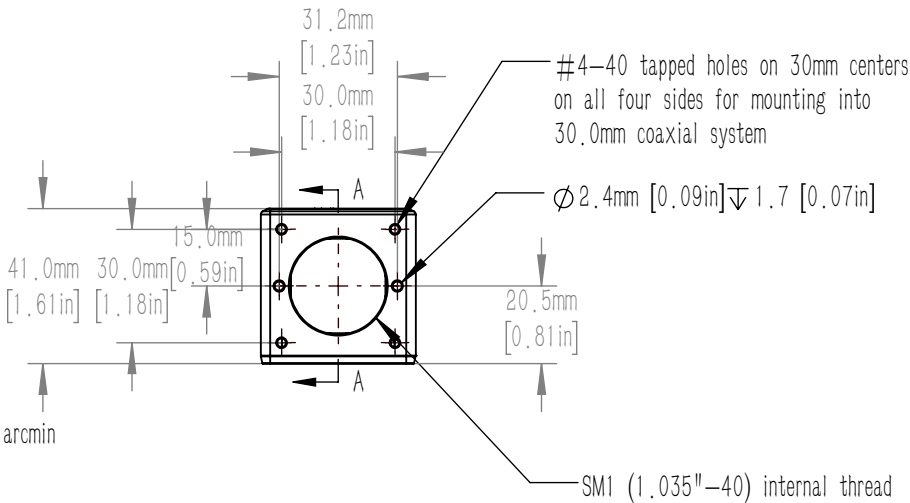
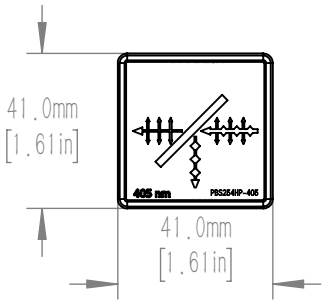


	PART	MATERIAL
①	MECHANICAL HOUSING	BLACK ANODIZED ALUMINUM
②	PBS254HP-405	UV FUSED SILICA




NOTES/SPECIFICATIONS:

1. OPTIC IS ALIGNED FOR REFLECTED BEAMS TO EXIT AT 90° ±20 arcmin

OPTICAL SPECIFICATIONS:

- CLEAR APERTURE: > Ø20.3 mm
- SURFACE QUALITY: 20-10 SCRATCH-DIG
- SURFACE FLATNESS: <λ/4 AT 633 nm
- TRANSMITTED BEAM DEVIATION: ±5 arcmin
- EXTINCTION RATIO: Tp:Ts > 2000:1
- TRANSMISSION: Tp >95%
- REFLECTION EFFICIENCY: Rs>99.5%
- COATING (ALL 4 OUTER OPTICAL SURFACES): VAR 405 nm, Rabs<0.25%, 0° AOI

FOR INFORMATION ONLY  
NOT FOR MANUFACTURING PURPOSES

DRAWING PROJECTION						
	NAME	DATE	30mm Cage Mounted 25.4mm High Power Polarizing Beamsplitter Cube 405nm, M4 Tap			
DRAWN	CWD	2022/5/18	PBS254HP-405-MM			
APPROVAL	ZSB	2022/5/18	MATERIAL	WEIGHT	SCALE	REV
FOR INFORMATION ONLYNOT FOR MANUFACTURING PURPOSES			SEE TABLE	0.085kg	1:1	A