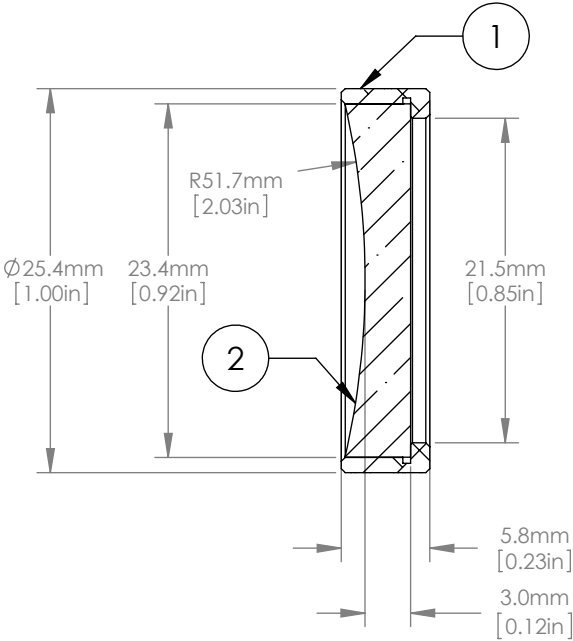
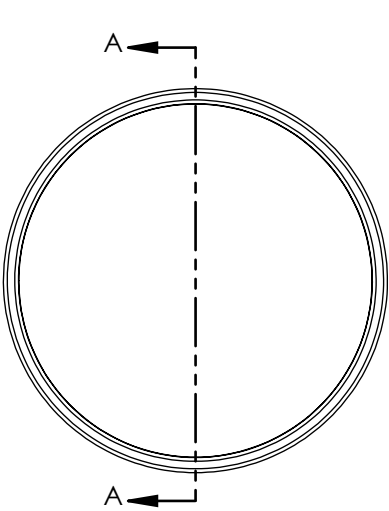




	ITEM	MATERIAL
①	BLACK ANODIZED MOUNTING RING	6061-T6 ALUMINUM
②	ROUND CYLINDRICAL LENS	N-BK7



NOTES/SPECIFICATIONS:

1. FOCAL LENGTH: -100.0mm ±1%
2. WORKING DISTANCE: -97.5mm
3. DESIGN WAVELENGTH: 587.6nm
4. CLEAR APERTURE: >21.0mm
5. SURFACE QUALITY: 60-40 SCRATCH-DIG
6. CENTRATION: ≤ 3 arcmin
7. COATING: BBAR 350-700nm, Ravg < 0.5%, 0° AOI

FOR INFORMATION ONLY
NOT FOR MANUFACTURING PURPOSES

DRAWING PROJECTION			 			
	NAME	DATE	D25.4 F=-100 Mounted Rd N-BK7 A Coated Plano Concave Cyl Lens			
DRAWN	CWD	2022/5/18	PCY1254RM--100-A			
APPROVAL	ZSB	2022/5/18	MATERIAL	WEIGHT	SCALE	REV
FOR INFORMATION ONLYNOT FOR MANUFACTURING PURPOSES			SEE TABLE	0.00489kg		C