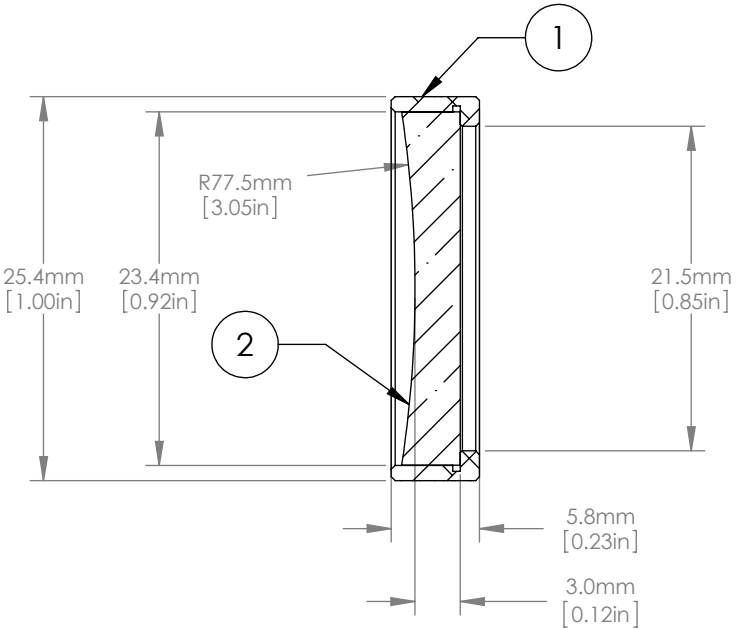
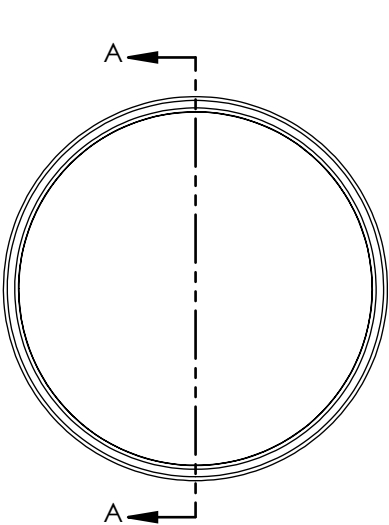




	ITEM	MATERIAL
①	BLACK ANODIZED MOUNTING RING	6061-T6 ALUMINUM
②	ROUND CYLINDRICAL LENS	N-BK7



NOTES/SPECIFICATIONS:

1. FOCAL LENGTH: -150.0mm ±1%
2. WORKING DISTANCE: -147.5mm
3. DESIGN WAVELENGTH: 587.6nm
4. CLEAR APERTURE: >21.0mm
5. SURFACE QUALITY: 60-40 SCRATCH-DIG
6. CENTRATION: ≤ 3 arcmin
7. COATING: BBAR 650-1050nm, Ravg < 0.5%, 0° AOI

FOR INFORMATION ONLY
NOT FOR MANUFACTURING PURPOSES

DRAWING PROJECTION			 			
	NAME	DATE	D25.4 F=-150 Mounted Rd N-BK7 B Coated Plano Concave Cyl Lens			
DRAWN	CWD	2022/5/18	PCY1254RM--150-B			
APPROVAL	ZSB	2022/5/18	MATERIAL	WEIGHT	SCALE	REV
FOR INFORMATION ONLYNOT FOR MANUFACTURING PURPOSES			SEE TABLE	0.00477kg		C