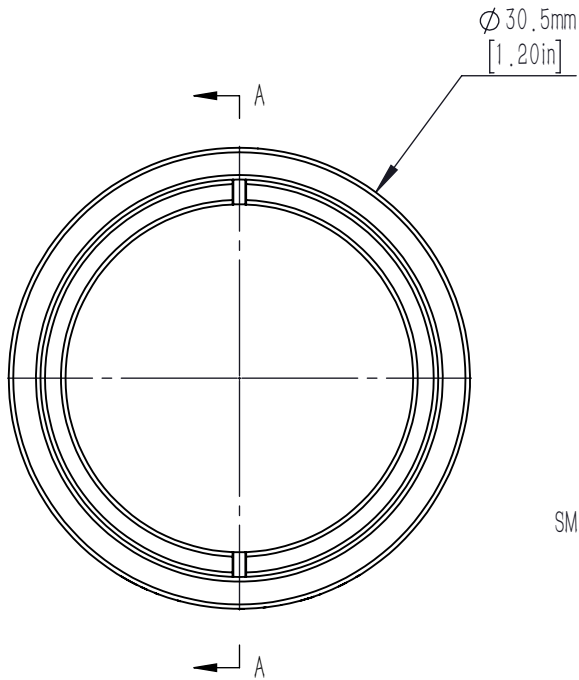
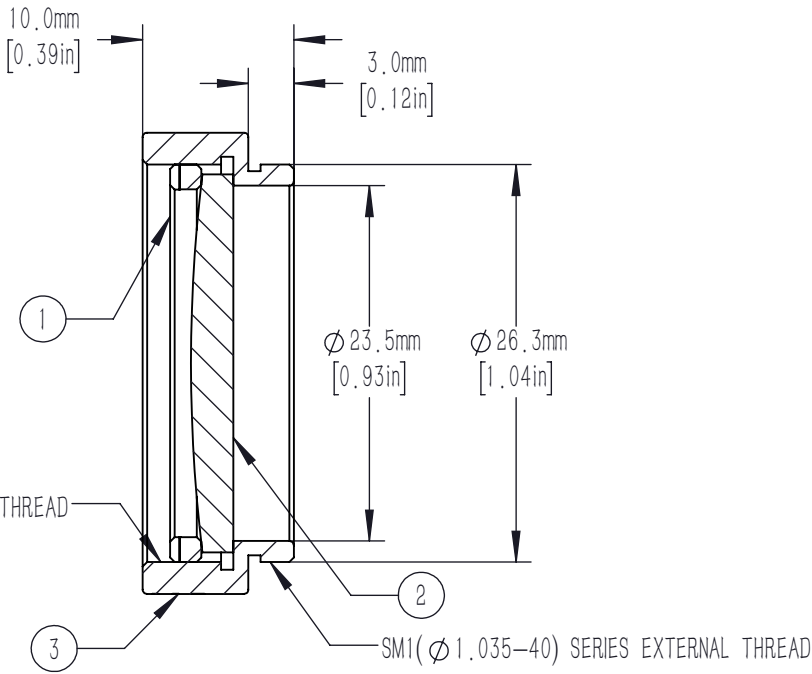


	PART DESCRIPTION	MATERIAL
①	SM1RR	ANODIZED ALUMINUM
②	PX1025-200	N-BK7
③	SM1L6-A	ANODIZED ALUMINUM




SM1($\varnothing 1.035-40$) SERIES INTERNAL THREAD



- NOTES/SPECIFICATIONS:
- DESIGN WAVELENGTH: 587.6nm
 - FOCAL LENGTH: $f=200.0\text{mm}\pm 1\%$
 - WORKING DISTANCE (REF): 198.1mm
 - CLEAR APERTURE: $> 90\%$ Of Diameter
 - SURFACE QUALITY: 40-20 SCRATCH-DIG

FOR INFORMATION ONLY NOT FOR
MANUFACTURING PURPOSES

DRAWING PROJECTION						
	NAME	DATE	Mounted D25 F=200.0 N-BK7 Plano Convex Lens			
DRAWN	CWD	2022/5/18	PX1025-200-ML			
APPROVAL	ZSB	2022/5/18	MATERIAL	WEIGHT	SCALE	REV
FOR INFORMATION ONLYNOT FOR MANUFACTURING PURPOSES			N/A	0.008kg	2: 1	A