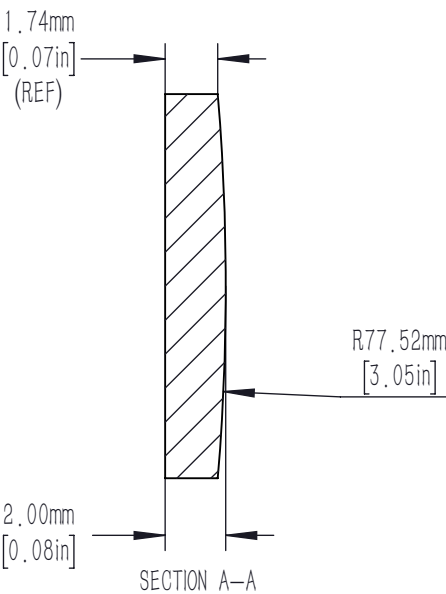
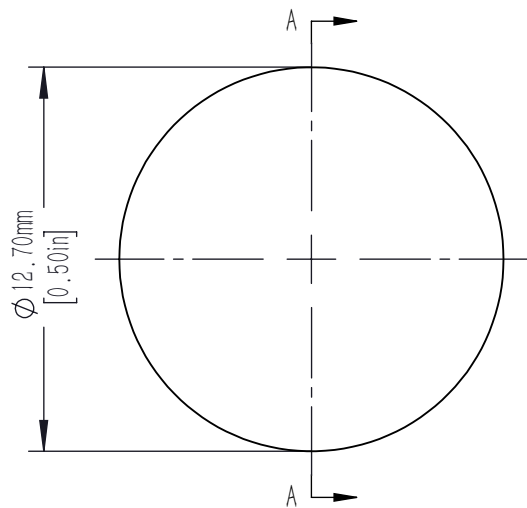





FOR INFORMATION ONLY NOT FOR  
MANUFACTURING PURPOSES



NOTES/SPECIFICATIONS:

- 1. DESIGN WAVELENGTH: 587.6nm
- 2. FOCAL LENGTH: f=150.0mm ± 1%
- 3. BACK FOCAL LENGTH(REF): bf=148.68mm
- 4. CLEAR APERTURE: >90%
- 5. SURFACE QUALITY: 40-20 SCRATCH-DIG
- 6. SURFACE FLATNESS(S1): λ/2@633nm
- 7. SURFACE POWER: 3 λ/2 @ 633nm
- 8. SURFACE IRREGULARITY: λ/4 @ 633nm
- 9. CENTRATION: <3arcmin
- 10. DIAMETER TOLERANCE: +0.0/-0.1mm
- 11. THICKNESS TOLERANCE: ±0.1mm
- 12. CHAMFER: <0.2 mm, 45°
- 13. COATING:BBAR Ravg<0.5% FROM 650nm-1100nm, 0° AOI, ON OUTER OPTICAL SURFACES

DRAWING PROJECTION			 			
						
	NAME	DATE	D12.7 F=150.0 N-BK7 B Coated Plano Convex Lens			
DRAWN	CWD	2022/5/18	PX1127-150-B			
APPROVAL	ZSB	2022/5/18	MATERIAL	WEIGHT	SCALE	REV
FOR INFORMATION ONLYNOT FOR MANUFACTURING PURPOSES			N-BK7	0.00058kg	4: 1	A