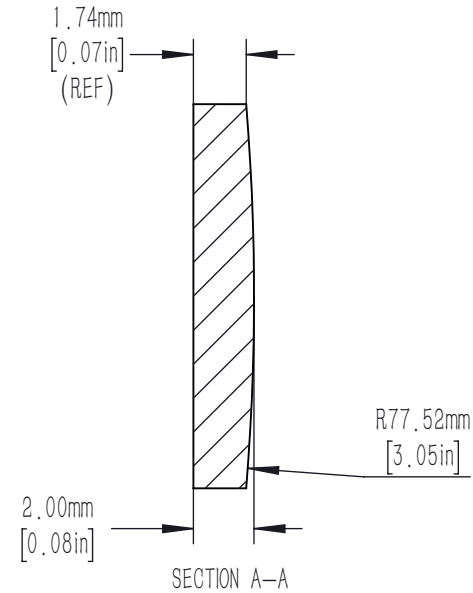
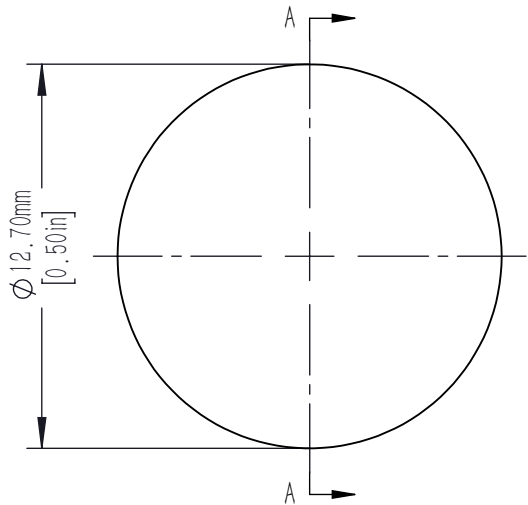




FOR INFORMATION ONLY NOT FOR
MANUFACTURING PURPOSES



- NOTES/SPECIFICATIONS:
- 1. DESIGN WAVELENGTH: 587.6nm
 - 2. FOCAL LENGTH: $f=200.0\text{mm} \pm 1\%$
 - 3. BACK FOCAL LENGTH(REF): $bf=198.68\text{mm}$
 - 4. CLEAR APERTURE: $>90\%$
 - 5. SURFACE QUALITY: 40-20 SCRATCH-DIG
 - 6. SURFACE FLATNESS(S1): $\lambda/2@633\text{nm}$
 - 7. SURFACE POWER: $3\lambda/2 @ 633\text{nm}$
 - 8. SURFACE IRREGULARITY: $\lambda/4 @ 633\text{nm}$
 - 9. CENTRATION: $<3\text{arcmin}$
 - 10. DIAMETER TOLERANCE: $+0.0/-0.1\text{mm}$
 - 11. THICKNESS TOLERANCE: $\pm 0.1\text{mm}$
 - 12. CHAMFER: $<0.2\text{mm}, 45^\circ$
 - 13. COATING: BBAR $R_{\text{avg}} < 0.5\%$ FROM 650nm-1100nm, 0° AOI, ON OUTER OPTICAL SURFACES

DRAWING PROJECTION						
	NAME	DATE	D12.7 F=200.0 N-BK7 B Coated Plano Convex Lens			
DRAWN	CWD	2022/5/18	PX1127-200-B			
APPROVAL	ZSE	2022/5/18	MATERIAL	WEIGHT	SCALE	REV
FOR INFORMATION ONLYNOT FOR MANUFACTURING PURPOSES			N-BK7	0.0006kg	4: 1	A