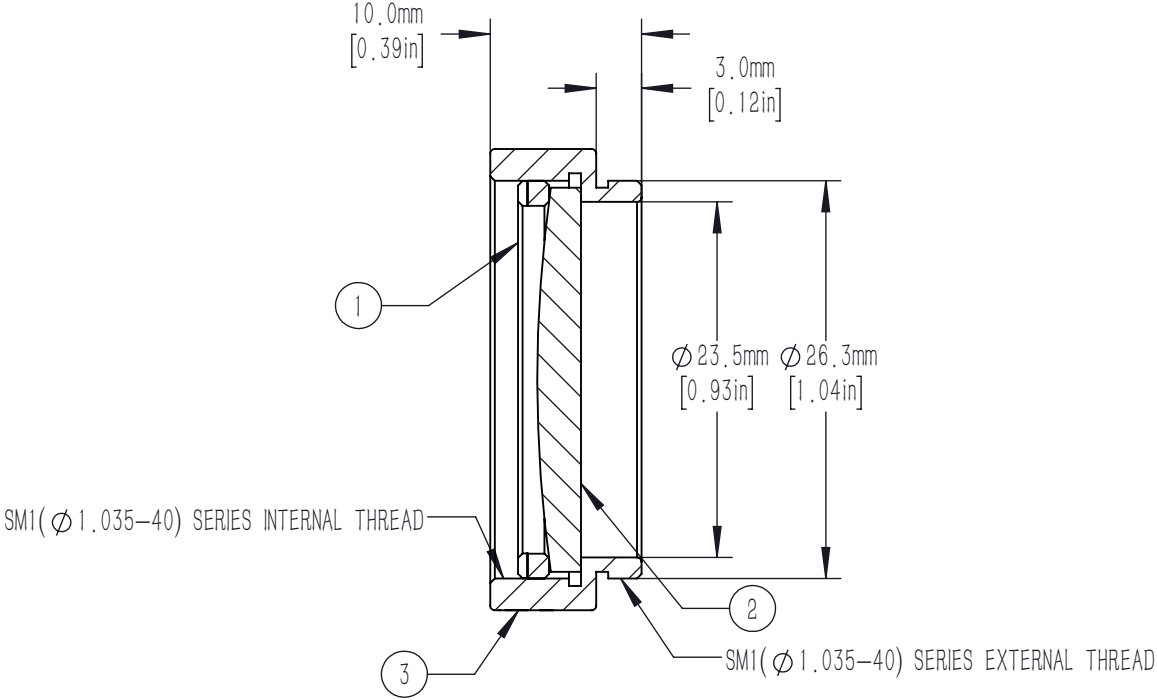
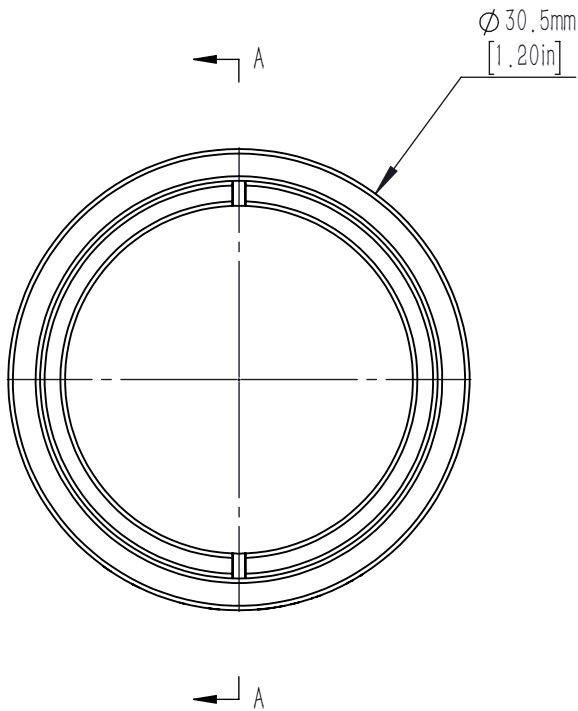



	PART DESCRIPTION	MATERIAL
①	SM1RR	ANODIZED ALUMINUM
②	PX1254-175-C	N-BK7
③	SM1L6-A	ANODIZED ALUMINUM



- NOTES/SPECIFICATIONS:
- DESIGN WAVELENGTH: 587.6nm
 - FOCAL LENGTH: $f=175.0\text{mm}\pm 1\%$
 - WORKING DISTANCE (REF): 172.5mm
 - CLEAR APERTURE: $> 90\%$ Of Diameter
 - SURFACE QUALITY: 40-20 SCRATCH-DIG
 - COATING: BBAR $R_{\text{avg}} < 0.5\%$ FROM 1050-1700nm, AOI: 0° ON OUTER OPTICAL SURFACES

FOR INFORMATION ONLY NOT FOR
MANUFACTURING PURPOSES

DRAWING PROJECTION						
	NAME	DATE	Mounted D25.4 F=175.0 N-BK7 C Coated Plano Convex Lens			
DRAWN	CWD	2022/5/18	PX1254-175-C-ML			
APPROVAL	ZSE	2022/5/18	MATERIAL	WEIGHT	SCALE	REV
FOR INFORMATION ONLYNOT FOR MANUFACTURING PURPOSES			N/A	0.010kg	2: 1	A