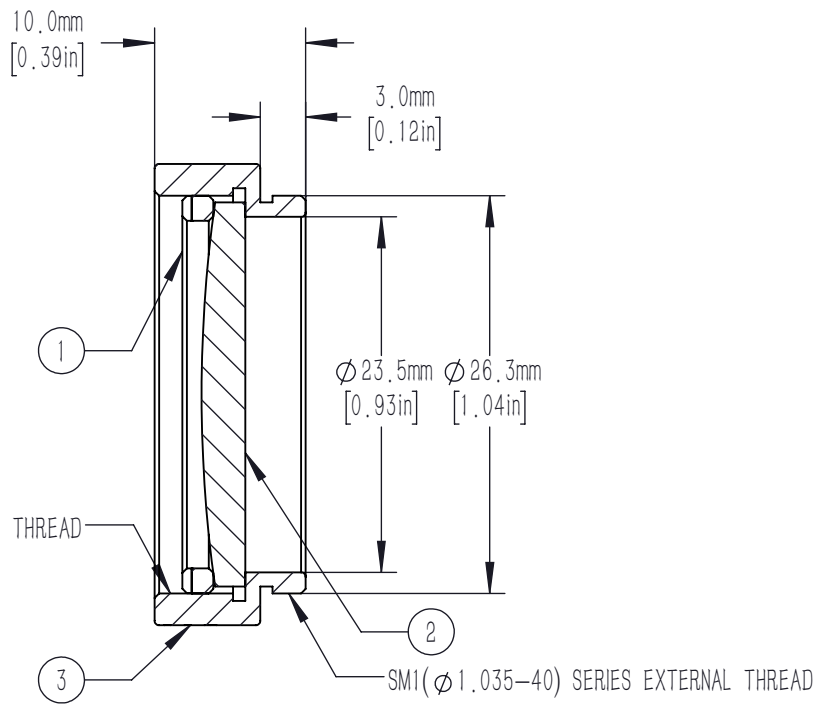
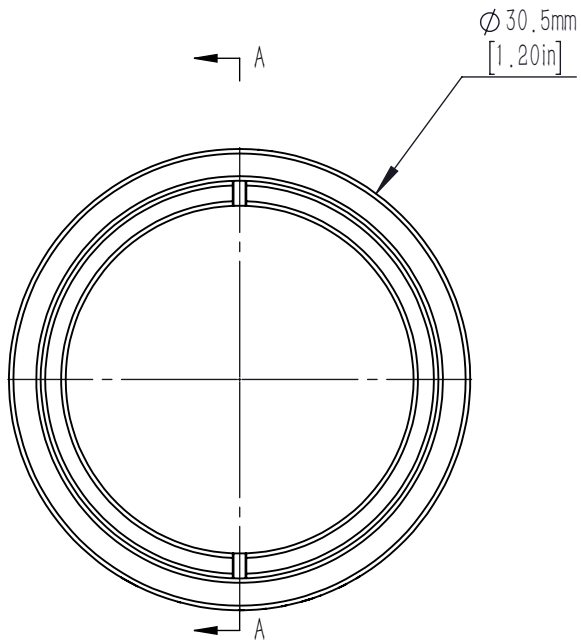




	PART DESCRIPTION	MATERIAL
①	SM1RR	ANODIZED ALUMINUM
②	PX1254-175	N-BK7
③	SM1L6-A	ANODIZED ALUMINUM



NOTES/SPECIFICATIONS:

1. DESIGN WAVELENGTH: 587.6nm
2. FOCAL LENGTH: $f=175.0\text{mm}\pm 1\%$
3. WORKING DISTANCE (REF): 172.5mm
4. CLEAR APERTURE: $> 90\%$ Of Diameter
5. SURFACE QUALITY: 40-20 SCRATCH-DIG

FOR INFORMATION ONLY NOT FOR
MANUFACTURING PURPOSES

DRAWING PROJECTION						
						
	NAME	DATE	Mounted D25.4 F=175.0 N-BK7 Plano Convex Lens			
DRAWN	CWD	2022/5/18	PX1254-175-ML			
APPROVAL	ZSE	2022/5/18	MATERIAL	WEIGHT	SCALE	REV
FOR INFORMATION ONLYNOT FOR MANUFACTURING PURPOSES			N/A	0.008kg	2: 1	A