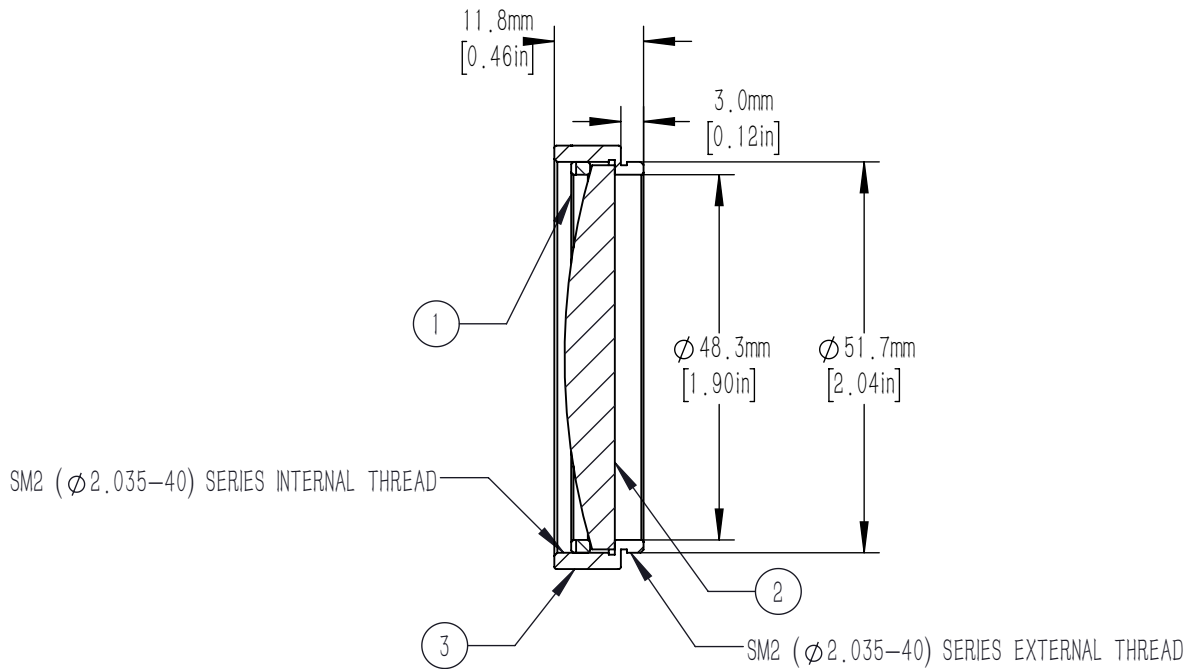
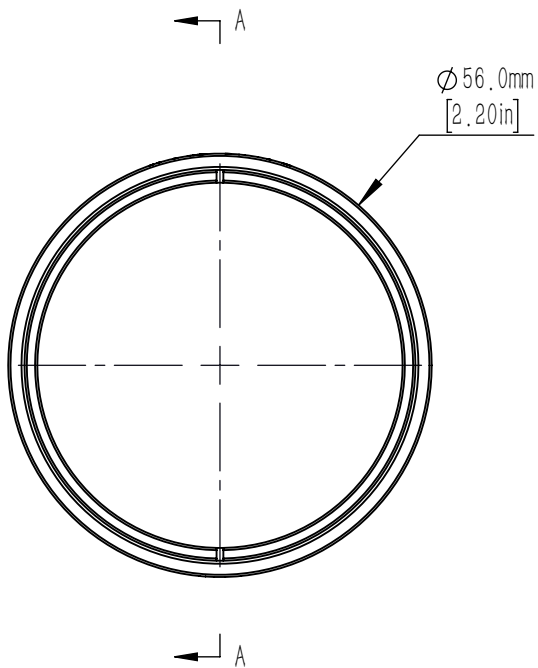



	PART DESCRIPTION	MATERIAL
①	SM2RR	ANODIZED ALUMINUM
②	PX1508-175-C	N-BK7
③	SM2L8-A	ANODIZED ALUMINUM



#### NOTES/SPECIFICATIONS:

- DESIGN WAVELENGTH: 587.6 nm
- FOCAL LENGTH:  $f=175.0 \text{ mm} \pm 1\%$
- WORKING DISTANCE (REF): 170.0 mm
- CLEAR APERTURE:  $> 90\%$  Of Diameter
- SURFACE QUALITY: 40-20 SCRATCH-DIG
- COATING: BBAR  $R_{\text{avg}} < 0.5\%$  FROM 1050-1700 nm, AOI:  $0^\circ$  ON OUTER OPTICAL SURFACES

FOR INFORMATION ONLY NOT FOR  
MANUFACTURING PURPOSES

DRAWING PROJECTION						
	NAME	DATE	Mounted D50.8 F=175.0 N-BK7 C Coated Plano Convex Lens			
DRAWN	CWD	2022/5/18	PX1508-175-C-ML			
APPROVAL	ZSB	2022/5/18	MATERIAL	WEIGHT	SCALE	REV
FOR INFORMATION ONLY NOT FOR MANUFACTURING PURPOSES			N/A	0.046kg	1:1	A