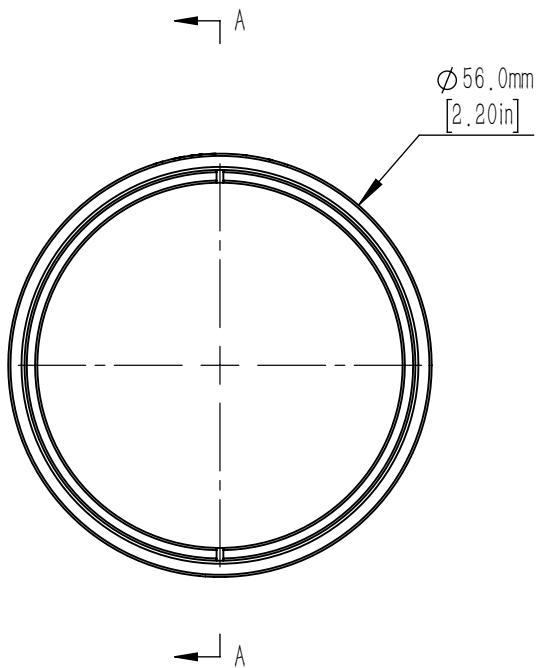


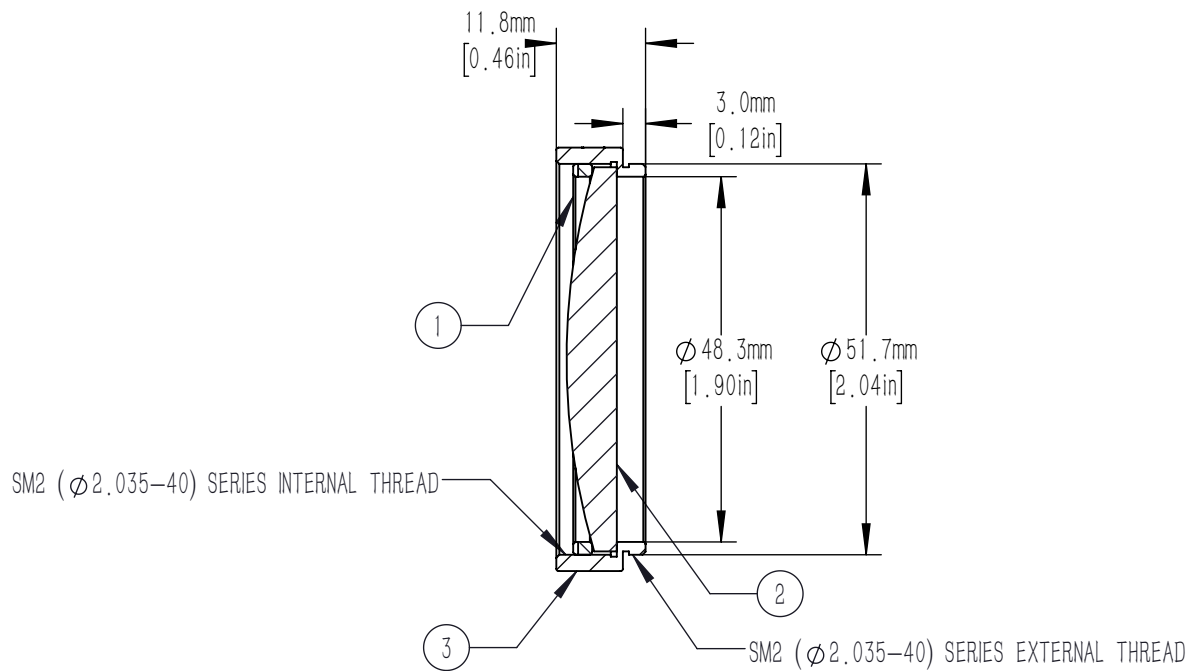
	PART DESCRIPTION	MATERIAL
①	SM2RR	ANODIZED ALUMINUM
②	PX1508-175	N-BK7
③	SM2L8-A	ANODIZED ALUMINUM





NOTES/SPECIFICATIONS:

1. DESIGN WAVELENGTH: 587.6 nm
2. FOCAL LENGTH: $f=175.0\text{ mm}\pm 1\%$
3. WORKING DISTANCE (REF): 170.0 mm
4. CLEAR APERTURE: $> 90\%$ Of Diameter
5. SURFACE QUALITY: 40-20 SCRATCH-DIG

FOR INFORMATION ONLY NOT FOR
MANUFACTURING PURPOSES



DRAWING PROJECTION		 				
	NAME	DATE	Mounted D50.8 F=175.0 N-BK7 Plano Convex Lens			
DRAWN	CWD	2022/5/18	PX1508-175-ML			
APPROVAL	ZSB	2022/5/18	MATERIAL	WEIGHT	SCALE	REV
FOR INFORMATION ONLYNOT FOR MANUFACTURING PURPOSES			N/A	0.03kg	1:1	A