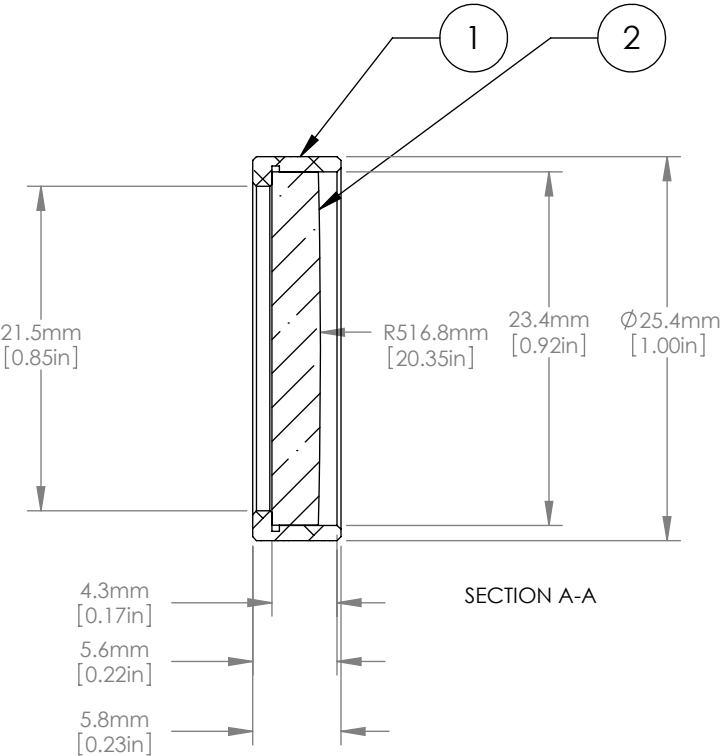
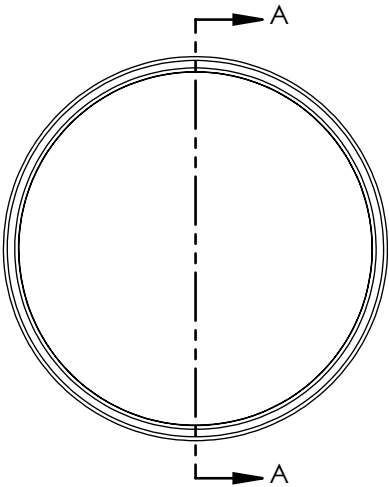




	ITEM	MATERIAL
①	BLACK ANODIZED MOUNTING RING	6061-T6 ALUMINUM
②	ROUND CYLINDRICAL LENS	N-BK7



- NOTES/SPECIFICATIONS:
1. FOCAL LENGTH: 1000.0mm ±1%
  2. WORKING DISTANCE: 996.5mm
  3. BBAR COATING: Ravg < 0.5% FOR 350-700nm
  4. DESIGN WAVELENGTH: 587.6nm
  5. CLEAR APERTURE: >21.0mm
  6. SURFACE QUALITY: 60-40 SCRATCH-DIG
  7. CENTRATION: ≤ 3 arcmin

FOR INFORMATION ONLY  
NOT FOR MANUFACTURING PURPOSES

DRAWING PROJECTION			 			
	NAME	DATE	D25.4 F=1000.0 Mounted Rd N-BK7 A Coated Plano Convex Cyl Lens			
DRAWN	CWD	2022/5/18	PXY1254RM-1000-A			
APPROVAL	ZSB	2022/5/18	MATERIAL	WEIGHT	SCALE	REV
FOR INFORMATION ONLYNOT FOR MANUFACTURING PURPOSES			SEE TABLE	0.03kg		B