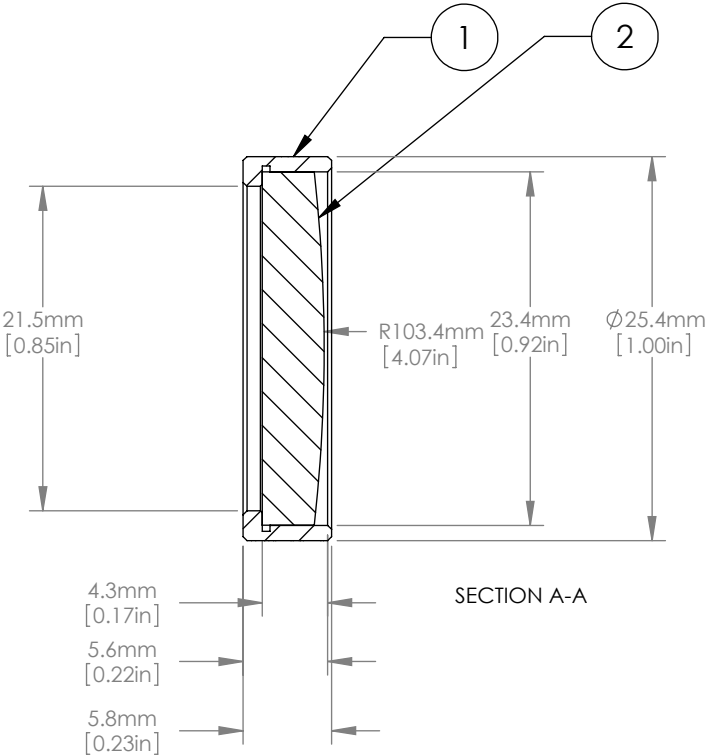
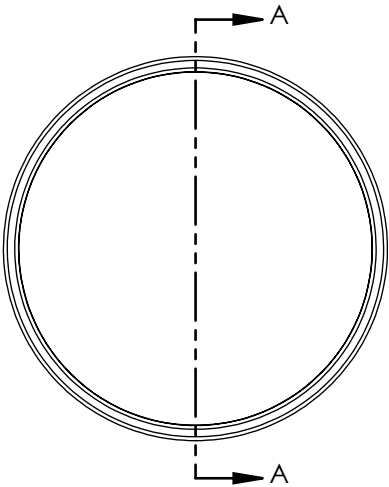




|   | ITEM                         | MATERIAL         |
|---|------------------------------|------------------|
| ① | BLACK ANODIZED MOUNTING RING | 6061-T6 ALUMINUM |
| ② | ROUND CYLINDRICAL LENS       | N-BK7            |



- NOTES/SPECIFICATIONS:
1. FOCAL LENGTH: 200.0mm ±1%
  2. WORKING DISTANCE: 196.0mm
  3. BBAR COATING: Ravg < 0.5% FOR 1050-1700nm
  4. DESIGN WAVELENGTH: 587.6nm
  5. CLEAR APERTURE: >21.0mm
  6. SURFACE QUALITY: 60-40 SCRATCH-DIG
  7. CENTRATION: ≤ 3 arcmin

FOR INFORMATION ONLY  
NOT FOR MANUFACTURING PURPOSES

|  |      |           |   |        |       |     |
|--|------|-----------|---|--------|-------|-----|
| DRAWING PROJECTION  |      |           |  |        |       |     |
|  | NAME | DATE      | D25.4 F=200.0 Mounted Rd N-BK7 C Coated Plano Convex Cyl Lens                         |        |       |     |
| DRAWN  | CWD  | 2022/5/18 | PXY1254RM-200-C   |        |       |     |
| APPROVAL   | ZSB  | 2022/5/18 | MATERIAL  | WEIGHT | SCALE | REV |
| FOR INFORMATION ONLYNOT FOR MANUFACTURING PURPOSES   |      |           | SEE TABLE   | 0.03kg |       | C   |