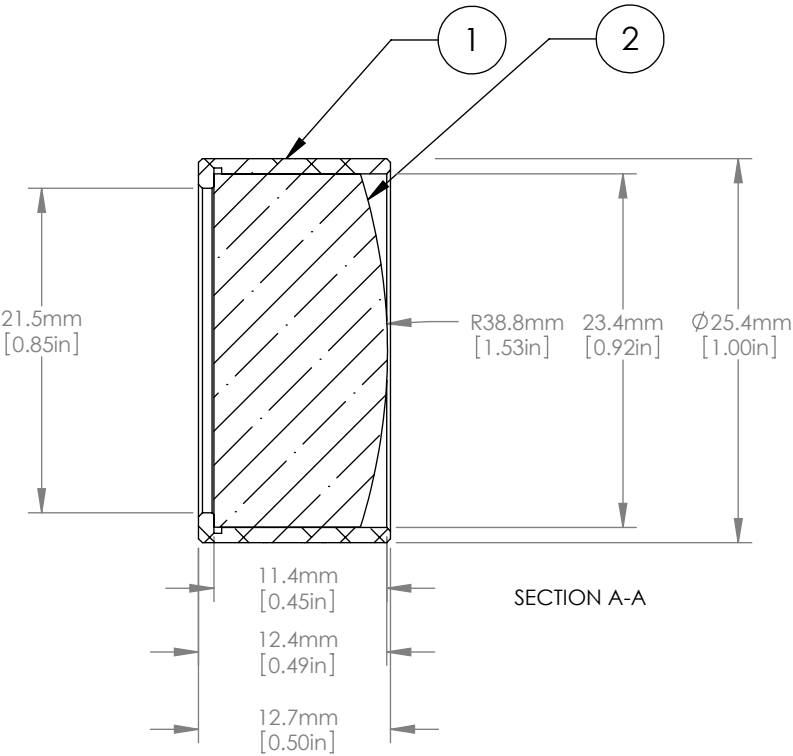
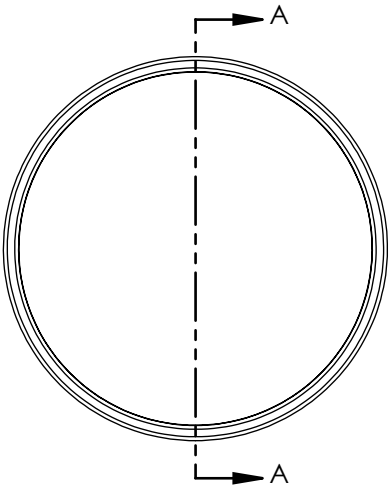




	ITEM	MATERIAL
①	BLACK ANODIZED MOUNTING RING	6061-T6 ALUMINUM
②	ROUND CYLINDRICAL LENS	N-BK7



NOTES/SPECIFICATIONS:
 FOCAL LENGTH: 75.0mm \pm 1%
 WORKING DISTANCE: 66.4mm
 WAVELENGTH RANGE: 350nm-2.0 μ m
 DESIGN WAVELENGTH: 587.6nm
 CLEAR APERTURE: >21.0mm
 SURFACE QUALITY: 60-40 SCRATCH-DIG
 CENTRATION: \leq 3 arcmin

FOR INFORMATION ONLY
 NOT FOR MANUFACTURING PURPOSES

DRAWING PROJECTION 			 睿创光科			
	NAME	DATE	D25.4 F=75.0 Mounted Rd N-BK7 Plano Convex Cyl Lens			
DRAWN	CWD	2022/5/18	PXY1254RM-75-1			
APPROVAL	ZSB	2022/5/18	MATERIAL	WEIGHT	SCALE	REV
FOR INFORMATION ONLYNOT FOR MANUFACTURING PURPOSES			SEE TABLE	0.03kg		B