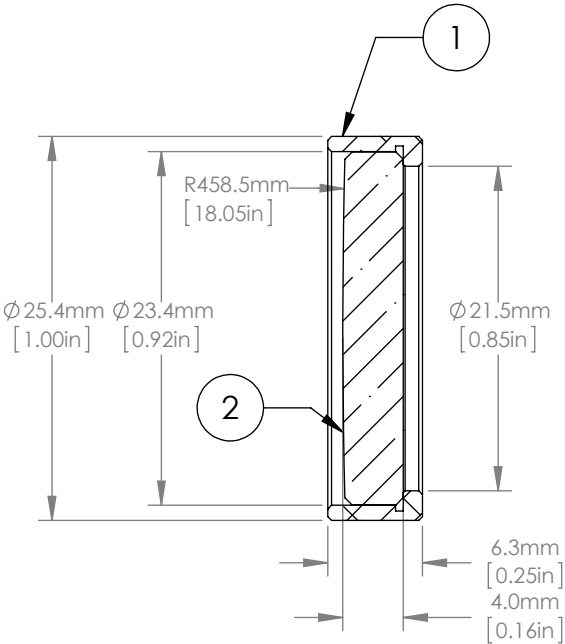
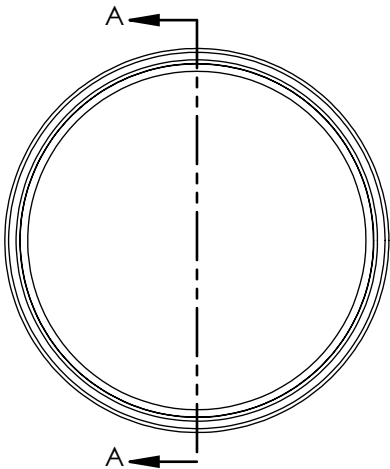




| | ITEM | MATERIAL |
|---|------------------------------|------------------|
| ① | BLACK ANODIZED MOUNTING RING | 6061-T6 ALUMINUM |
| ② | ROUND CYLINDRICAL LENS | UV FUSED SILICA |



NOTES/SPECIFICATIONS:

1. FOCAL LENGTH: 1000.0mm ±1%
2. WORKING DISTANCE: 996.0mm
3. DESIGN WAVELENGTH: 587.6nm
4. CLEAR APERTURE: >21.0mm
5. SURFACE QUALITY: 40-20 SCRATCH-DIG
6. CENTRATION: ≤ 3arcmin
7. COATING: BBAR 350-700nm, Ravg < 0.5%, 0° AOI

FOR INFORMATION ONLY
NOT FOR MANUFACTURING PURPOSES

| | | | | | | | | |
|---|------|-----------|---|---------|-------|---|--|--|
| DRAWING PROJECTION | | |  | | |  | | |
| | NAME | DATE | D25.4 F= 1000 Mounted Rd UVFS A Coated Plano-Convex Cyl Lens | | | | | |
| DRAWN | CWD | 2022/5/18 | PXY4254RM-1000-A | | | | | |
| APPROVAL | ZSB | 2022/5/18 | MATERIAL | WEIGHT | SCALE | REV | | |
| FOR INFORMATION ONLYNOT FOR MANUFACTURING PURPOSES | | | SEE TABLE | 0.005kg | | A | | |