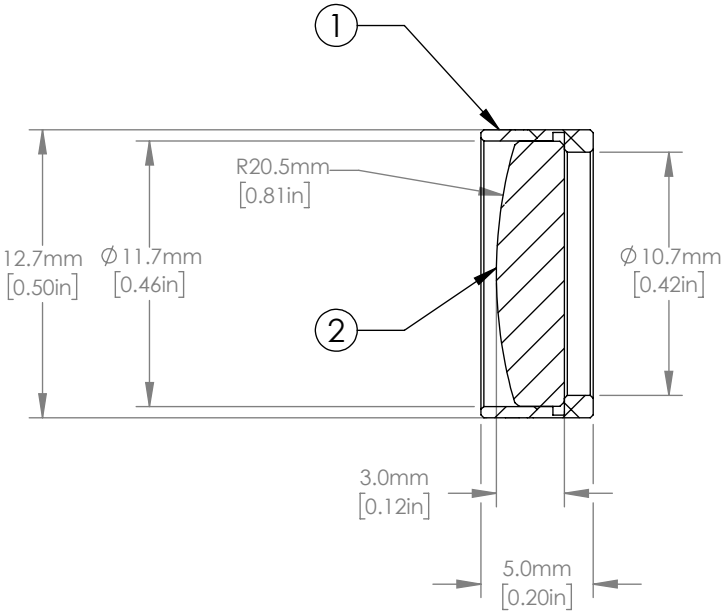
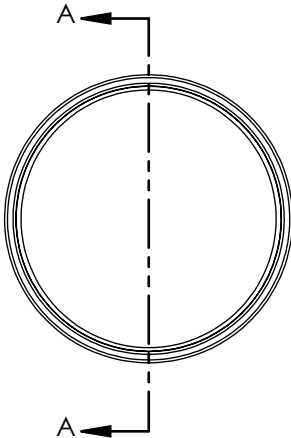


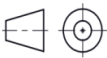

	ITEM	MATERIAL
①	BLACK ANODIZED MOUNTING RING	6061 T6 ALUMINUM
②	ROUND CYLINDRICAL LENS	CALCIUM FLUORIDE



NOTES/SPECIFICATIONS:

- DESIGN WAVELENGTH: 4μm
- FOCAL LENGTH: 50.0mm ± 1%
- WORKING DISTANCE: 46.6mm
- CLEAR APERTURE: >10.5mm
- SURFACE QUALITY: 40-20 SCRATCH-DIG
- CENTRATION: <5arcmin

FOR INFORMATION ONLY  
NOT FOR MANUFACTURING PURPOSES

DRAWING PROJECTION			 			
	NAME	DATE	F=50 mm, D12.7 mm, CaF2 Mounted Plano-Convex Round Cyl Lens			
DRAWN	CWD	2022/5/18	PXY5127RM-50-1			
APPROVAL	ZSB	2022/5/18	MATERIAL	WEIGHT	SCALE	REV
FOR INFORMATION ONLYNOT FOR MANUFACTURING PURPOSES			SEE TABLE	0.01kg		B